



Contact Us

P.O. Box 206, Hudsonville, MI 49426
Ph: 1.800.338.7337, 616.896.7100
Fax: 616.896.1286
SoundOffSignal.com



Table of Contents

How to use	5
Understanding terms	6

Lightbars

mpower® Exterior, full size.....	9
nFORCE® nxt Exterior, full size	9
nFUSE® Exterior, full size	10
nFUSE® xl Exterior, full size.....	10
nROADS®	
Fleet Series Lightbar	11
Connect-n-Go System	12
Mini & Midsize Lightbar.....	13
PINNACLE Mini & Midsize Lightbar	14
nFORCE® Interior Lightbar	15
mpower® Grid Light.....	16

Directional Warning

mpower®	
Arrow System	19
Traffic Controller	21
TM100	21
UltraLITE Plus	
Interior Warning Bar	22
Exterior Warning Bar.....	23
Exterior Warning Bar with Arrow Ends.....	24

Perimeter Lighting

mpower®	
Fascia 3"	27
Fascia 4".....	28
HD Light.....	29
Fascia 4x2	30
Accessories	31
6x4	33
7x3	35
P-Series	
6x4 P.....	37
7x3 P.....	39
9x7 P.....	41
SL Running Light.....	42
nFORCE®	
Surface, Deck/Grille.....	43
Recess.....	44
Windshield.....	45
Intersector	
Under Mirror, Surface Mount.....	46
XF Flush Mount.....	47
Bolt 2.....	47
GHOST®	
Surface.....	48
Multi-Mount.....	47
Universal UnderCover LED Insert	50
Oval & Round Warning Light	51
Vehicle Specific Accessories.....	52
mpower® Performance White Lighting	
2x1	53
2x1 Dual Stacked Kit	54
6x1	54

Control Systems

bluePRINT®	
500 Series Control System	57
Link Module	61
Sync	62
SoundOff Signal®	
Eight Button Controller	63

Sirens & Speakers

nERGY® 400 Series	67
FR100 Series Siren.....	68
200 Series Siren	69
100J Series Siren	70
100U Series Siren	71
LF Aftershock Siren System.....	72



At SoundOff Signal, we believe in the power of showing up when it matters most. From quality, reliable products to our committed, friendly team, we are proud to serve those who care for our communities.

With an innovative, entrepreneurial spirit and commitment to reliable, relatable customer service, SoundOff Signal has continued to push the envelope for advancements in integrated, strategic lighting and controls for law enforcement, fire, EMS and amber vehicles.

We are proud to be a global company with local roots. Headquartered in Hudsonville, Michigan, our facilities of over 190,000 square foot are home to operations, on-site manufacturing and customer service.

Electronics

Flashers	75
ConfigureIT System	76
Direction Arrow Switch	76
reVerb Backup Alarm.....	76

Beacons

4200 Series	79
4500 Series	80
nROADS® Beacons	81

Work Area & Interior Lighting

Work Area	
GOLIGHT®	85
Banksman BM3	86
Par 36 Work Light	86
Scenelight S17	86
Interior Lighting	
Dome LED Light	87
Calisto	87

HOW TO USE THIS CATALOG

This section explains how to use this catalog, determine color codes and where to find more information. If you have any questions or need help configuring a product, please visit our website at soundoffsignal.com or call **800.338.7337**.



***To configure product to your exact needs, visit soundoffsignal.com or contact customer service.**

Standard Part Numbering / Color Codes

This catalog uses variables in place to represent a specific color or finish. Each section will identify what the variable (x, y, z, etc.) is representing. The variable will be replaced with the referenced code (A, R, G, B, W, etc.). For example, if it was desired to have part number ENT2B3(x) configured with blue LEDs, we would refer to the color chart (below), look for the referenced variable (x) and review the color options. From there it can be determined that blue LEDs are represented as the letter "B", so we would insert "B" for (x) in the part number resulting in the actual part number ENT2B3B.

NOTE: These color tables and options change from product to product, so you cannot use a chart from a different product to determine the proper color to use. If you have any questions or would like help determining the proper part number, please visit our website at soundoffsignal.com or call 800.338.7337.

Referenced Part Number: ENT2B3(x)

Resulting Part Number: ENT2B3B

Replace (x), (y) or (z) in the Order Number for Standard Color Selection

8 LED Single colors (x) A= ● B= ● G= ● R= ● W= ○

16 LED Dual colors (y) D= ●○ E= ●○ F= ●○ J= ●○ K= ●○ L= ●○ M= ●○ N= ●○ P= ●○

18 LED Tricolors (z) BAG= ●●○ BAW= ●●○ BGW= ●●○ GAW= ●●○ RAG= ●●○ RAW= ●●○ RBA= ●●○
RBW= ●●○ RBG= ●●○ RGW= ●●○

Certifications

General product certifications can be found on the product pages within this catalog. For complete certification details, please visit the installation guide for each product on soundoffsignal.com.

Contact Information:

Website: soundoffsignal.com
 Phone Number: 800.338.7337 or 616.896.7100
 Office Hours: 8 am - 5 pm (EST), M-F
 Mailing Address: PO Box 206
 Hudsonville, MI 49426

Many vehicle-specific solutions available!



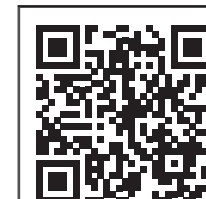
We offer a long list of accessories for several vehicle types (Chevrolet Tahoe, Ford Police Interceptor Utility, Dodge Durango, etc.).

- Hook kits for exterior lightbars
- Interior lightbars
- Speaker brackets
- Mirror mounts
- Rear spoiler brackets
- Grille brackets

Visit soundoffsignal.com to configure the product to your specific vehicle or contact your sales representative.

UNDERSTANDING TERMS:

- Fascia light:** A low profile light which attaches to the surface of a vehicle, such as the "fascia" or trim. It is intended to blend in as an extension of the vehicle.
- Light Sync:** The ability to connect multiple lights to flash together or in alternating patterns.
- Sync 1:** A sync technology implemented on SoundOff Signal's early perimeter warning lights with 3-wire control interfaces (not to be confused with 3-wire datal control). Can sync up to four lights.
- Sync 2:** A sync technology implemented on SoundOff Signal's newer perimeter warning lights with 4 or 5-wire control interfaces. Can sync up to twenty-four lights.
- The sync systems are not compatible with each other. Sync 1 lights can't synchronize with Sync 2 lights or vice versa.*
- mpower:** Our patented line of lights that have transformed LED lighting. Molded one-piece, silicone housing and optic design providing a rugged, highly durable light.
- Stop/Tail/Turn Light:** A red LED light with a clear or red lens functioning with direct input from the vehicle's standard wiring – no internal flasher. For mounting on the rear of the vehicle to indicate stop when brake pedal is applied (high output), tail running light (low output) and turn signal (intermittent high flash).
- Turn Light:** A specific turn signal light either amber LED with amber or clear lens, or red LED with red or clear lens. This light can operate through the vehicle's flasher or with an internal flasher which operates in a single flash or a sequential mode flash.
- Quick Mount:** A type of mount using an adhesive in which the light can be installed directly to a vehicle or to an accessory such as a wedge. This method allows for installation from one side of the vehicle or sometimes termed as a "blind install."
- Stud Mount:** A type of mount where a threaded shaft protrudes from the component. The shaft or "stud" is then intended to insert into a hole in the mating component/vehicle surface and be retained with a mating threaded nut. This method requires access behind the mounting surface.
- Screw Mount:** A type of mount where screws are driven from the front face of the component or light into the mounting surface of the vehicle. This method allows for installation from one side of the vehicle or sometimes termed as a "blind install."



Learn more about specific products by visiting our YouTube Channel.



LIGHTBARS

SoundOff
Signal |||||®

LIGHTBARS

EXTERIOR FULL SIZE LIGHTBARS

mpower® LIGHTBAR



Revolutionizing emergency lighting through durable silicone lenses in a sleek design

Product #:	EMPLB*
Features:	At only 1" thick, mpower is 50 percent thinner than its leading competitors
LED Color Capabilities:	Single, dual, tricolor
LED Color Options:	●, ●, ●, ●, ●, ○
Dimensions(l):	48.4" (112cm), 54.8" (139 cm), 61" (154.9 cm)
Dimensions(h):	1.1" (2.7 cm)
Dimensions(d):	10.6" (27 cm)
Mounts:	Standard hook bracket mount with angle adjustment wedge, headache rack mount
Certifications:	SAE J595, SAE J845, CA Title 13, ECE R65, EMC/ECE R10-5, NFPA 1901

nFORCE® nxt LIGHTBAR



High functioning lightbar with optimal light output

Product #:	ENNLB*
Features:	Modules can be configured as single, dual or tricolor for maximum functionality
LED Color Capabilities:	Single, dual, tricolor
LED Color Options:	●, ●, ●, ●, ●, ○
Top Cover Options:	●, ●, ●, ● (translucent and opaque versions)
Dimensions(l):	24" (61 cm), 36" (91cm), 42" (107 cm), 48" (122cm), 54" (137cm), 60" (152 cm), 72" (183 cm)
Dimensions(h):	2.24" (5.79cm)
Dimensions(d):	12" (31 cm)
Mounts:	Standard hook kit mount with angle adjustment wedge, headache rack mount
Certifications:	SAE J595, SAE J845, ECE R10, ECE R65, ECE R148, NFPA 1901

● ● ● ● ● ○ *This is a configured model number. To configure product to your exact needs, visit soundoffsignal.com or contact customer service.

EXTERIOR FULL SIZE LIGHTBARS

nFUSE® LIGHTBAR



The right features, including dual-color capability, for the right price

Product #:	ENULB*
Features:	Numerous configuration capabilities allow for maximum functionality
LED Color Capabilities:	Single, dual
LED Color Options:	●, ●, ●, ●, ●, ○
Lens Options:	○, ●, ●, ● (tinted version also available)
Dimensions(l):	36" (91cm), 42" (107 cm), 48" (122cm), 54" (137cm), 60" (152 cm), 72" (183 cm)
Dimensions(h):	1.9" (4,8 cm)
Dimensions(d):	12" (30.5 cm)
Mounts:	Standard hook bracket mount with angle adjustment wedge, headache rack mount
Certifications:	SAE J595, SAE J845, CA Title 13, NFPA 1901, KKK 1822-F

nFUSE® xl LIGHTBAR



Dual level lightbar with 360-degrees of continuous light



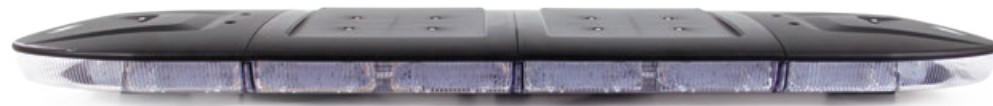
Product #:	ENULB*
Features:	Top and bottom levels are individually programmable for maximum functionality
LED Color Capabilities:	Single, dual
LED Color Options:	●, ●, ●, ●, ●, ○
Lens Color Options:	○, ●, ●, ● (tinted version also available)
Dimensions(l):	24" (61cm), 42" (107 cm), 48" (122cm), 54" (137cm), 60" (152 cm), 72" (183 cm)
Dimensions(h):	3.6" (9 cm)
Dimensions(d):	12" (30.5 cm)
Mounts:	Standard hook bracket mount with wide angle adjustments, headache rack mount
Certifications:	SAE J595, SAE J845, CA Title 13, NFPA 1901, KKK 1822-F

● ● ● ● ● ○ *This is a configured model number. To configure product to your exact needs, visit soundoffsignal.com or contact customer service.

LIGHTBARS

EXTERIOR FULL SIZE LIGHTBARS

nROADS® FLEET SERIES LED LIGHTBAR



Sturdy, dependable construction to work as hard as your work truck

Product #:	ENRLB*
Features:	Dual color modules with white LEDs provide full, bright scene lighting.
LED Color Capabilities:	Single, dual
LED Color Options:	●, ●, ●, ●, ●, ○
Top Cover Options:	●, ●, ●, ●, ●
Dimensions(l):	36" (91cm), 42" (107 cm), 48" (122cm), 54" (137cm), 60" (152 cm)
Dimensions(h):	2.55" (6.5 cm)
Dimensions(d):	12" (31 cm)
Mounts:	Standard hook bracket mount with wide angle adjustment wedges, headache rack mount
Certifications:	SAE J845, CA Title 13

nROADS Accessories

Auto Dim Retrofit Kit

Includes auto dim sensor board, harnesses, mounting hardware and top cover.

Blue	PNFLBTRDRLBL
Graphite	PNFLBTRDRILGY
Red	PNFLBTRDRLRD
Amber	PNFLBTRDRILYL

Retrofit Solar Panel Kit

Charges batteries while the vehicle is sitting idle. Alleviates dead batteries.

Blue	PNFLBTSIGLBL
Graphite	PNFLBTSIGLGY
Red	PNFLBTSIGLRD
Amber	PNFLBTSIGLYL

EXTERIOR FULL SIZE LIGHTBARS

nROADS® FLEET CONNECT-N-GO SYSTEM



Preprogrammed for streamlined installation; choose your lights, connect, and go!

NOTE: This system is ordered only through the configurator.

Product #:	ENRLB*
Features:	Reduces complexity and time for installation. Connect-n-Go lightbars are preprogrammed to get you up and running faster.

Included in the Connect-n-Go system:

- nROADS Fleet Series exterior lightbar and handheld remote controller

Choice of:

- Four mpower® 4" lights (2 front, 2 rear). Fascia: mpower Fascia 4" lights
- Two mpower® 4" lights (choice of installation front or rear). Fascia: mpower Fascia 4" lights
- No mpower® 4" lights mpower. Fascia: Fascia 4" lights



mpower Fascia 4" Mounting Options

Quick Mount	Stud Mount	Screw Mount
Single Color	Single Color	Single Color
6 LED, Single Color EMPSCG2QMS2(x)	6 LED, Single Color EMPSCG2STS2(x)	6 LED, Single Color EMPSCG2SMS2(x)
8 LED, Single Color EMPSCG2QMS3(x)	8 LED, Single Color EMPSCG2STS3(x)	8 LED, Single Color EMPSCG2SMS3(x)
Dual Color	Dual Color	Dual Color
12 LED, Dual Color EMPSCG2QMS4(y)	12 LED, Dual Color EMPSCG2STS4(y)	12 LED, Dual Color EMPSCG2SMS4(y)
Tricolor	Tricolor	Tricolor
18 LED, Tricolor EMPSCG2QMS5(z)	18 LED, Tricolor EMPSCG2STS5(z)	18 LED, Tricolor EMPSCG2SMS5(z)

Replace (x), (y) or (z) in the Order Number for Standard Color Selection

6 or 8 LED Single Color (x) A= ● B= ● R= ● W= ○

8 or 12 LED Dual Color (y) D= ●○ E= ●○ F= ●○ J= ●● K= ●● M= ●●

18 LED Tricolor (z) BAW= ●●○ RAW= ●●○ RBA= ●●○ RBW= ●●○

● ● ● ● ○ *This is a configured model number. To configure product to your exact needs, visit soundoffsignal.com or contact customer service.

● ● ● ● ○ *This is a configured model number. To configure product to your exact needs, visit soundoffsignal.com or contact customer service.

LIGHTBARS

EXTERIOR MINI & MIDSIZE LIGHTBARS

nROADS[®] MINI & MIDSIZE LIGHTBAR



Rugged design with extreme durability

Product #:	ENRMB*
Features:	Lightbars can be configured with 3, 6, 9, 12 or 18 LEDs for maximum functionality.
LED Color Capabilities:	Single, dual, tricolor (flashes single or dual)
LED Color Options:	●, ●, ●, ●, ●, ○
Lens Color Options:	○, ●, ●
Dimensions(l):	17.2" (43.7 cm), 24.25" (61.6 cm)
Dimensions(h):	2.83" (7.2 cm)
Dimensions(d):	7.95" (20.2 cm)
Mounts:	Magnetic mount, Standard Permanent mount, Headache Rack mount
Certifications:	SAE J845, CA Title 13, NFPA 1901

Accessories		
Cigar Plug Controller (configuration option)	Four Button	PCPNR401
VHB Magnetic Plate Adapter Kit	One VHB pad and metal plate	PNRLBK03

EXTERIOR MINI & MIDSIZE LIGHTBARS

PINNACLE MINI LED LIGHTBAR



Optimal lighting output spread far and wide, in a compact footprint

Product #:	EPL7MB*
Features:	Magnetic mount has cigar plug with 3-position rocker switch panel (on, off and flash pattern advance)
Dimensions(l):	14.16" (36 cm)
Dimensions(h):	1.90" (4.8 cm)
Dimensions(d):	8.27" (21 cm)
Certifications:	SAE J845

Pinnacle 7000 Product #: EPL7**	
LED Color Capabilities:	Single, split
Available Single LED Colors:	●, ●, ●, ●, ●, ○
Available Split LED Colors:	●○, ●○, ●○, ●○, ●○, ●○, ●○, ●○, ●○, ●○, ●○, ●○, ●○, ●○, ●○, ●○
Available Lens Colors:	○, ●
Mounts:	Magnetic, permanent and high permanent mounts

Pinnacle 7100 Product #: EPL71**	
LED Color Capabilities:	Single, split
Available Single LED Colors:	●, ●, ●, ●, ●, ○
Available Split LED Colors:	●○, ●○, ●○, ●○, ●○, ●○, ●○, ●○, ●○, ●○, ●○, ●○, ●○, ●○, ●○, ●○
Available Lens Colors:	○, ●
Mounts:	Magnetic, permanent and high permanent mounts

Pinnacle 7300 Product #: EPL73**	
LED Color Capabilities:	Single, dual
Available Single LED Colors:	●
Available Split LED Colors:	●○, ●○, ●○, ●○, ●○, ●○, ●○, ●○, ●○, ●○
Available Lens Colors:	○, ●
Mounts:	Magnetic, permanent

Brackets sold separately for high permanent mount.



● ● ● ● ● ○ *This is a configured model number. To configure product to your exact needs, visit soundoffsignal.com or contact customer service.

** Standard part numbers can be found on soundoffsignal.com

● ● ● ● ● ○ *This is a configured model number. To configure product to your exact needs, visit soundoffsignal.com or contact customer service.

LIGHTBARS

INTERIOR WINDSHIELD LIGHTBARS

nFORCE® INTERIOR LIGHTBARS

BEST SELLING



Perfect blend of SoundOff Signal technology, dependability and versatility



Front Interior, 6 module, universal fitment

Product #:	ENFWB*
Features:	Lower profile than competing lightbars for less windshield and personal obstruction
LED Color Capabilities:	Single, dual, tricolor
LED Color Options:	●, ●, ●, ●, ●, ○
Dimensions(l):	14.3" (36 cm) 3 Module, 20" (51 cm) 4 Module
Dimensions(h):	1" (2.5 cm) 3 & 4 Module
Dimensions(d):	5" (12.7 cm) to 7.5" (19 cm). Each side adjustable 7.5" (19 cm) (universal, each side)

Available for front and rear windshield.

Many vehicle-specific solutions available!



Vehicles supported:

- Chevrolet Tahoe, Silverado
- Ford Expedition, Police Interceptor Utility, F-Series, Mustang Mach-E
- Dodge Durango, Charger
- Universal fitment
- And more!

Visit soundoffsignal.com to configure the product to your specific vehicle or contact your sales representative.

● ● ● ● ● ○ *This is a configured model number. To configure product to your exact needs, visit soundoffsignal.com or contact customer service.

POD LIGHTS

mpower® GRID LIGHT



1x1 Single Stack with Flat Mount



2x2 Single Stack with Magnet Mount

The industry's first tricolor pod

Product #: EMPGL*	
Features:	The power of a lightbar in the footprint of a beacon.
LED Color Capabilities:	Single, dual, tricolor
LED Color Options:	●, ●, ●, ●, ●, ○
Type:	1x1 Single Stack 2x2 Single Stack
Dimensions(l):	7.46" (19 cm) 11.71" (29.74 cm)
Dimensions(h):	1.5" (3.8 cm) 1.5" (3.8 cm)
Mounts:	Combo, flat, magnetic and mirror mounts
Certifications:	SAE J845, NFPA 1901

● ● ● ● ● ○ *This is a configured model number. To configure product to your exact needs, visit soundoffsignal.com or contact customer service.



DIRECTIONAL WARNING

SoundOFF
Signal |||||®

DIRECTIONAL WARNING

ARROW SYSTEMS

mpower[®] ARROW SYSTEM



Designed for ease, durability and serious optic performance

Product #:	EMPAK* (Bracket and Non-Bracket)
Features:	Vehicle-specific, optic-grade silicone arrow system with 3-wire technology
LED Color Capabilities:	Single, dual, tricolor
LED Color Options:	●, ●, ●, ●, ●, ○
Usage:	Exterior or interior
Mounts:	6 Module= 6 stud mounts, 8 Module = 8 stud mounts
Certifications:	SAE J595, SAE J845, CA Title 13

Bracket Includes:

- 3- or 4-module bracket
- mpower 4", 3-wire lights
- 15 foot power/control harness



*1 and 2 module brackets also available (to act as non-arrow perimeter lighting)

Arrow Harness Kits (brackets sold separately)	
Includes 12" breakout box and harness, two distribution harnesses and a 15 foot power/control harness, powers up to eight lights	EMPAKKT01
Includes 36" breakout box and harness, two distribution harnesses and a 15 foot power/control harness, powers up to eight lights	EMPAKKT02
Includes 12" breakout box and harness, two distribution harnesses and a 15 foot power/control harness, powers up to six lights	EMPAKKT03
Includes 36" breakout box and harness, two distribution harnesses and a 15 foot power/control harness, powers up to six lights	EMPAKKT04
Six Module (brackets sold separately)	
Includes six 4" Fascia tricolor stud mount lights (red/amber/white), breakout box and harness, two distribution harnesses and a 15 foot power/control harness	EMPAK0098M
Eight Module (brackets sold separately)	
Includes eight 4" Fascia tricolor stud mount lights (red/amber/white), breakout box and harness, two distribution harnesses and a 15 foot power/control harness	EMPAK0098N

Many vehicle-specific solutions available!



Vehicles supported:

- Chevrolet Tahoe
- Ford Expedition, Police Interceptor Utility
- Dodge Durango
- And more!

Visit soundoffsignal.com to configure the product to your specific vehicle or contact your sales representative.

● ● ● ● ● ○ *This is a configured model number. To configure product to your exact needs, visit soundoffsignal.com or contact customer service.



LIGHTBARS

DIRECTIONAL WARNING

PERIMETER LIGHTING

CONTROL SYSTEMS

SIRENS & SPEAKERS

ELECTRONICS

BEACONS

WORK AREA

LIGHTBARS

DIRECTIONAL WARNING

PERIMETER LIGHTING

CONTROL SYSTEMS

SIRENS & SPEAKERS

ELECTRONICS

BEACONS

WORK AREA

DIRECTIONAL WARNING

TRAFFIC CONTROLLERS

NEW **mpower** TRAFFIC CONTROLLER



The newest member of our mpower family of products

Product #:	EMPTC*
Features:	Designed for exterior or interior use
LED Color Capabilities:	Single, dual, tricolor
LED Color Options:	●, ●, ●, ●, ○
Dimensions(l):	26" (66 cm) 4 Module, 32.38" (82.2 cm) 5 Module, 38.75" (98 cm) 6 Module, 52" (133 cm) 8 Module, 64.25" (163 cm) 10 Module
Dimensions(h):	1.6" (3.9 cm)
Dimensions(d):	2.4" (6.2 cm)
Wiring Harness Lengths:	3, 15 or 25 feet
Mounts:	Deck/Grille
Certifications:	SAE J595, SAE J845, CA Title 13, IP67
Accessories	
Deck/Grille Mounting Kit - 1 Hole, Short (1 Bracket)	PMPTCM01
Deck/Grille Mounting Kit - 2 Hole, Medium (1 Bracket)	PMPTCM02
Deck/Grille Mounting Kit - 3 Hole, Long (1 Bracket)	PMPTCM03
Deck/Grille Mounting Kit - 7 Hole (1 Bracket)	PMPTCM07



Weatherproof and vibration resistant design for external or internal use

Product #:	ETMTC0001-AC
Features:	Complete solution for traffic advising and warning with panel controller, cable and mounting.
LED Color Capabilities:	Single
LED Color Options:	●
Flash Patterns:	4 traffic arrow patterns, 6 warning patterns, 4 cruise/end-flasher patterns
Dimensions(l):	47.2" (119.89 cm)
Dimensions(h):	1.8" (4.57 cm)
Dimensions(d):	2.5" (6.35 cm)
Certifications:	ECE, SAE J595, CA Title 13, IPX6

● ● ● ● ○ *This is a configured model number. To configure product to your exact needs, visit soundoffsignal.com or contact customer service.

INTERIOR & EXTERIOR DIRECTIONAL WARNING BARS

UltraLITE Plus INTERIOR WARNING BAR



Intense warning power provides a distinct safety advantage

Product #:	EL3PU*
Features:	Slim, narrow design is perfect for headliner, dash, windshield or rear deck mounts in all types of vehicles
LED Color Capabilities:	Single, split
Flash Patterns:	2 Module: 33 flash patterns; 4 Module: 21 flash patterns; 8 Module: single colors, 20 arrow or 12 warning, split colors, 19 warning flash patterns or 12 Module: single colors, 20 arrow or 12 warning, split colors, 19 warning flash patterns
Dimensions(l):	7" (17.78 cm) 2 Module, 14.25" (36.20 cm) 4 Module, 26" (66.04 cm) 8 Module, 38.75" (98.43 cm) 12 Module
Dimensions(h):	1.5" (3.8 cm)
Dimensions(d):	1.7" (4.31 cm)
Certifications:	SAE J595, CA Title 13

Interior Directional Warning

Single and Split Colors

4 Module	Available in: A,B,D, E,F,H,J,K,M,P,R,W	EL3PH04A00(x)
8 Module	Available in: A,B,D, E,F,G,H,J,K,M,R,W	EL3PH08A00(x)

Single Warning Ends, Amber Center

8 Module	Available in: B,D,G, J,R,W	EL3PH08A10(x)
----------	----------------------------	---------------

Single Warning Ends, Amber Center

(flashes independent from arrow)

8 Module	Available in: A,B,J, N,R,W	EL3PH08B10(x)
12 Module	Available in: A,B,D, F,G,J,K,M,N,R,W	EL3PH12A00(x)

Single Warning Ends, Amber Center

12 Module	Available in: B,J,R	EL3PH12A10(x)
-----------	---------------------	---------------

Dual Warning Ends, Amber Center

12 Module	Available in: A,B,G, H,J,K,R,W	EL3PH12A20(x)
-----------	--------------------------------	---------------

Single Warning Ends, Amber Center

(flashes independent from arrow)

12 Module	Available in: B,J,R	EL3PH12B10(x)
-----------	---------------------	---------------

Replace (x) in the Order Number for Standard Color Selection

Single Colors A= ● B= ● G= ● R= ● W= ○

Split Colors D= ●○ E= ●○ F= ●○ H= ●○ J= ●● K= ●● L= ●● M= ●● N= ●● P= ●●

● ● ● ● ○ *This is a configured model number. To configure product to your exact needs, visit soundoffsignal.com or contact customer service.

Dual Warning Ends, Amber Center

(flashes independent from arrow)

12 Module	Available in: A,B,E, G,H,J,K,R	EL3PH12B20(x)
-----------	--------------------------------	---------------

Windshield Mount

8 Module	Available in: A,B,D, E,F,G,J,K,L,M,N,R,W	EL3PZ08A00(x)
12 Module	Available in: A,B,D, E,F,G,J,K,L,M,N,R,W	EL3PZ12A00(x)

Interior Windshield Mount Lightbar

2 Module	Includes 12v Cigar Plug, Suction Cup Mount & Universal Headliner Brackets (pair). Available in: A,B,D,E,F,G,H, J,K,L,M,P,R,W	EL3PH02A0+(x)
----------	--	---------------

4 Module	Includes 12v Cigar Plug, Suction Cup Mount & Universal Headliner Brackets (pair). Available in: A,B,D,E,F,G,H, J,K,L,M,P,R,W	EL3PH04A0+(x)
----------	--	---------------

DIRECTIONAL WARNING

DIRECTIONAL WARNING BARS

UltraLITE Plus EXTERIOR WARNING BAR



Intense visibility with easy installation

Product #: EL3PU*

Features:	Custom color configurations offered for exterior 4, 8 or 12 module bars			
LED Color Capabilities:	Single, dual and split			
Flash Patterns:	2 Module: 33 flash patterns; 4 Module: 21 flash patterns; 8 Module: single colors, 20 arrow or 12 warning, split colors, 19 warning flash patterns or 12 Module: single colors, 20 arrow or 12 warning, split colors, 19 warning flash patterns			
Dimensions	2 Module	4 Module	8 Module	12 Module
Dimensions(l):	7" (17.78 cm)	14.25" (36.20 cm)	26" (66.04 cm)	38.75" (98.43 cm)
Dimensions(h):	1.5" (3.81 cm)	1.5" (3.81 cm)	1.5" (3.81 cm)	1.5" (3.81 cm)
Dimensions(d):	1.7" (4.32 cm)	1.7" (4.32 cm)	1.7" (4.32 cm)	1.7" (4.32 cm)
Certifications:	SAE J595, CA Title 13			

Exterior Directional Warning

Single and Split Colors

2 Module	Available in: A,B,D, E,F,G,H,J,K,M,R,W	EL3PD02A00(x)
4 Module	Available in: A,B,D, E,F,G,J,K,M,N,R,W	EL3PD04A00(x)
8 Module	Available in: A,B,D, E,F,G,H,J,K,M,R,W	EL3PD08A00(x)

Single Warning Ends, Amber Center

8 Module	Available in: B, J, R	EL3PD08A10(x)
----------	-----------------------	---------------

Single Warning Ends, Amber Center

(flashes independent from arrow)

8 Module	Available in: B, J, R	EL3PD08B10(x)
12 Module	Available in: A,B,D, E,F,G,J,K,M,R,W	EL3PD12A00(x)

Single Warning Ends, Amber Center

12 Module	Available in B,J,R	EL3PD12A10(x)
-----------	--------------------	---------------

Dual Warning Ends, Amber Center

12 Module	Available in: A,B,J, M,R	EL3PD12A20(x)
-----------	--------------------------	---------------

Replace (x) in the Order Number for Standard Color Selection

Single Colors A= ● B= ● G= ● R= ● W= ○

Split Colors D= ●○ E= ●○ F= ●○ H= ●○ J= ●● K= ●● L= ●● M= ●● N= ●● P= ●●

●●●○ *This is a configured model number. To configure product to your exact needs, visit soundoffsignal.com or contact customer service.

DIRECTIONAL WARNING BARS

UltraLITE Plus EXTERIOR WARNING BAR

Accessories

Exterior and Interior

L-Brackets

Universal	One hole, 1.5 inches, pair	PUL3DGM01
	Two holes, 2 inches, pair	PUL3DGM02
	Three holes, 2.5 inches, pair	PUL3DGM03
	Seven holes, 4 inches, pair	PUL3DGM

Vehicle Specific Visor Mounts

Chevrolet	Tahoe	Pair	PUL3M02
Chevrolet	Impala	Pair	PUL3M03
Dodge	Charger	Pair	PUL3M04

UltraLITE Plus EXTERIOR WARNING BAR WITH ARROW ENDS



Six module arrow heads provide direct, visual communication to oncoming traffic

Product #: EL3PA12A00A (15 ft. Harness), EL3PA12A01A (25 ft. Harness)

Features:	Intense visibility with easy installation.	
LED Color Options:	●●●●○	
Flash Patterns:	Warning, arrow, or default	
Dimensions(l):	51.75" (131.45 cm)	
Dimensions(h):	21.5" (54.6 cm)	
Dimensions(d):	1.5" (3.8 cm)	
Mounting:	Attachment brackets (included)	
Certifications:	SAE J595, CA Title 13	

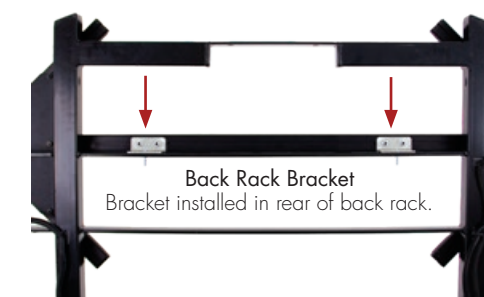
Accessories

Back Rack Bracket Kit

PUL3BRM
Includes two mounting brackets and hardware

Features: Attaches back of arrow to cross bar of the back rack

Directional warning bar and back rack sold separately.



●●●○ *This is a configured model number. To configure product to your exact needs, visit soundoffsignal.com or contact customer service.



PERIMETER LIGHTING

SoundOff
Signal ®

PERIMETER LIGHTING

FASCIA LIGHTS

mpower[®] FASCIA 3"



Patented, silicone lens and optic design delivers advantages over conventional polycarbonate lenses

mpower Fascia 3" Light

Features:	First extremely compact, tricolor line of perimeter lighting on the market
LED Color Capabilities:	Single, dual, tricolor
LED Color Options:	●, ●, ●, ●, ○
Number of LEDs Available:	
Single Color	4, 8
Dual Color	8
Tricolor	12
Light Sync:	Up to 24 lightheads (Sync 2)
Flash Patterns:	15
Dimensions(l):	3.04" (7.72 cm)
Dimensions(h):	0.92" (2.3 cm)
Dimensions(d):	0.42" (1 cm)
Mounts:	Quick, screw, stud
Certifications:	SAE J595, SAE J845, CA Title 13, ECE R65, ECE R10

Bezels sold separately, but highly recommended unless recess mounted. See page 31 for bezel and other accessory options.

3" mpower Fascia Lights

Quick Mount		Stud Mount		Screw Mount	
3"		3"		3"	
4 LED, Single Color	EMPS1QMS1(x)	4 LED, Single Color	EMPS1SLS1(x)	4 LED, Single Color	EMPS1SMS1(x)
8 LED, Single Color	EMPS1QMS3(x)	8 LED, Single Color	EMPS1SLS3(x)	8 LED, Single Color	EMPS1SMS3(x)
8 LED, Dual Color	EMPS1QMS3(y)	8 LED, Dual Color	EMPS1SLS3(y)	8 LED, Dual Color	EMPS1SMS3(y)
12 LED, Tricolor	EMPS1QMS4(z)	12 LED, Tricolor	EMPS1SLS4(z)	12 LED, Tricolor	EMPS1SMS4(z)

Replace (x), (y) or (z) in the Order Number for Standard Color Selection

Single Colors (x)	A= ● B= ● R= ● W= ○
Dual Colors (y)	D= ●○ E= ●○ F= ●○ H= ●○ J= ●●
Tricolors (z)	RBA= ●●● RBW= ●●○

● ● ● ○ To configure product to your exact needs, visit soundoffsignal.com or contact customer service.

FASCIA LIGHTS

mpower[®] FASCIA 4"



Patented, silicone lens and optic design delivers advantages over conventional polycarbonate lenses

mpower Fascia 4" Light

Features:	First extremely compact, tricolor line of perimeter lighting on the market
LED Color Capabilities:	Single, dual, tricolor
LED Color Options:	●, ●, ●, ●, ○
Number of LEDs Available:	
Single Color	6, 8
Dual Color	12
Tricolor	18
Light Sync:	Up to 24 lightheads (Sync 2)
Flash Patterns:	15
Dimensions(l):	4.04" (10.3 cm)
Dimensions(h):	0.92" (2.3 cm)
Dimensions(d):	0.42" (1 cm)
Mounts:	Quick, screw, stud
Certifications:	SAE J595, SAE J845, CA Title 13, ECE R65, ECE R10

Bezels sold separately, but highly recommended unless recess mounted. See page 31 for bezel and other accessory options.

4" mpower Fascia Lights

Quick Mount		Stud Mount		Screw Mount	
4"		4"		4"	
6 LED, Single Color	EMPS2QMS2(x)	6 LED, Single Color	EMPS2STS2(x)	6 LED, Single Color	EMPS2SMS2(x)
8 LED, Single Color	EMPS2QMS3(x)	8 LED, Single Color	EMPS2STS3(x)	8 LED, Single Color	EMPS2SMS3(x)
12 LED, Dual Color	EMPS2QMS4(y)	12 LED, Dual Color	EMPS2STS4(y)	12 LED, Dual Color	EMPS2SMS4(y)
18 LED, Tricolor	EMPS2QMS5(z)	18 LED, Tricolor	EMPS2STS5(z)	18 LED, Tricolor	EMPS2SMS5(z)

Replace (x), (y) or (z) in the Order Number for Standard Color Selection

Single Colors (x)	A= ● B= ● R= ● W= ○
Dual Colors (y)	D= ●○ E= ●○ F= ●○ H= ●○ J= ●●
Tricolors (z)	RBA= ●●● RBW= ●●○

● ● ● ○ To configure product to your exact needs, visit soundoffsignal.com or contact customer service.

PERIMETER LIGHTING

FASCIA LIGHTS

mpower[®] HD LIGHT



Patented, silicone lens and optic design delivers advantages over conventional polycarbonate lenses

mpower HD Light

Features:	First extremely compact, tricolor line of perimeter lighting on the market
LED Color Capabilities:	Single, dual, tricolor
LED Color Options:	●, ●, ●, ●, ○
Number of LEDs Available:	
Single Color	6, 8
Dual Color	12
Tricolor	18
Light Sync:	Up to 24 lightheads (Sync 2)
Flash Patterns:	15
Dimensions(l):	4.25" (10.8 cm)
Dimensions(h):	0.92" (2.3 cm)
Dimensions(d):	0.6" (1.5 cm)
Mounts:	Stud
Certifications:	SAE J595, SAE J845, CA Title 13

Bezels sold separately, but highly recommended unless recess mounted. See page 31 for bezel and other accessory options.

mpower HD Light

Stud Mounts

HD	
6 LED, Single Color	EMPS4STS2(x)
8 LED, Single Color	EMPS4STS3(x)
12 LED, Dual Color	EMPS4STS4(y)
18 LED, Tricolor	EMPS4STS5(z)

Replace (x), (y) or (z) in the Order Number for Standard Color Selection

Single Colors (x)	A= ● B= ● R= ● W= ○
Dual Colors (y)	D= ●○ E= ●○ F= ●○ H= ●○ J= ●●
Tricolors (z)	RBA= ●●● RBW= ●●○

● ● ● ● ○ To configure product to your exact needs, visit soundoffsignal.com or contact customer service.

FASCIA LIGHTS

mpower[®] FASCIA 4X2



Patented, silicone lens and optic design delivers advantages over conventional polycarbonate lenses

mpower 4x2

Features:	First extremely compact, tricolor line of perimeter lighting on the market
LED Color Capabilities:	Single, dual, tricolor
LED Color Options:	●, ●, ●, ●, ○
Number of LEDs Available:	
Single Color	12, 16
Dual Color	24
Tricolor	36
Light Sync:	Up to 24 lightheads (Sync 2)
Flash Patterns:	15
Dimensions(l):	4.07" (10.34 cm)
Dimensions(h):	1.5" (3.8 cm)
Dimensions(d):	0.43" (1.09 cm)
Mounts:	Quick, screw, stud
Certifications:	SAE J595, SAE J845, CA Title 13, ECE R65, ECE R10, NFPA 1901

Bezels sold separately, but highly recommended unless recess mounted. See page 31 for bezel and other accessory options.

mpower 4x2 Lights

Quick Mount		Stud Mount		Screw Mount	
4x2		4x2		4x2	
12 LED, Single Color	EMPSA05BN-(x)	12 LED, Single Color	EMPSA05CO-(x)	12 LED, Single Color	EMPSA05BVW-(x)
16 LED, Single Color	EMPSA05BS-(x)	16 LED, Single Color	EMPSA05C1-(x)	16 LED, Single Color	EMPSA05BX-(x)
24 LED, Dual Color	EMPSA05BT-(x)	24 LED, Dual Color	EMPSA05C2-(x)	24 LED, Dual Color	EMPSA05BY-(x)
36 LED, Tricolor	EMPSA05BU-(z)	36 LED, Tricolor	EMPSA05C3-(z)	36 LED, Tricolor	EMPSA05BZ-(z)

Replace (x), (y) or (z) in the Order Number for Standard Color Selection

Single Colors (x)	A= ● B= ● R= ● W= ○ G= ●
Dual Colors (x)	G= ●○ D= ●○ E= ●○ F= ●○ H= ●○ J= ●●
Tricolors (z)	6= ●●● 8= ●●○

● ● ● ● ○ To configure product to your exact needs, visit soundoffsignal.com or contact customer service.

PERIMETER LIGHTING

ACCESSORIES



Universal Accessories

Brackets:		
Quick Clip Mount: Quick Clip Bracket		
3", black		PMP1BKQCLP
4", black		PMP2BKQCLP
Stud Mount: 90 Degree Adjustable Bracket		
3", black		PMP1BKDGJ
3", white		PMP1BKDGJ-W
4", black		PMP2BKDGJ
4", white		PMP2BKDGJ-W
4 x 2, metal		PMP2BKDGJ-W
Stud Mount: 90 Degree Adjustable Edge Bracket		
3", black		PMP1BKEDGE
3", white		PMP1BKEDGE-W
4", black		PMP2BKEDGE
4", white		PMP2BKEDGE-W
License Plate, Stud Mount		
3", vertical mount		PMP1BRK2LPV
4", vertical mount		PMP2BRK2LPV
Bezels:		
Single Bezel, Screw Mount		
Replace (x) for finish = (B for Black, C for Chrome, P for Primed)		
3"		PMP1BZLO1(x)
4"		PMP2BZLO1(x)
4x2		PMP2BZLO2(x)
Single Bezel, Stud Mount		
HD Light		PMP4BZLO1(x)
Double Bezel, Stud Mount		
HD Light		PMP4BZLO3(x)
Double Bezel, Quick Mount		
HD Light		PMP4BZLO4(x)

ACCESSORIES



Universal Accessories

Wedges:		
Quick Mounts		
Replace (x) for wedge finish = (B for Black, W for White)		
3", 5 degree		PMP1WDG05(x)
3", 15 degree		PMP1WDG15(x)
3", 35 degree		PMP1WDG35(x)
4", 5 degree		PMP2WDG05(x)
4", 15 degree		PMP2WDG15(x)
4", 35 degree		PMP2WDG35(x)
4 x 2, 5 degree		PMP8WDG(x)01
4 x 2, 15 degree		PMP8WDG(x)02
4 x 2, 35 degree		PMP8WDG(x)03
Includes wedge and 3M VHB adhesive		
Rock Mount:		
4", stud mount and HD		PMP4BKRKLB
Windshield Shrouds:		
Stud Mounts, Adjustable 25 to 90 Degrees		
3" narrow, black		PMP1WSS2B
4", single, black		PMP2WSSSB
3", dual shroud, black		PMP1WSDDB
4", dual, black		PMP2WSDDB
4x2 single, black		PMP2WSSSB
4x2 dual, black		PMP2WSDDB

mpower® THIRD BRAKE LIGHT BEZEL



Add Fascia 4x2 lights to keep your vehicle seen in all environments

Product#: PMP2BZLO2 (mpower Fascia 4x2's sold separately.)		
Features:	Housing mounts seamlessly behind the existing third brake light	
Fitment:	2015-2023 Ford F-15; 2017-2023 Ford Super Duty	
Dimensions:	Without mpower 4x2 lights	With mpower 4x2 lights
Dimensions(l):	31.47" (79.93 cm)	31.47" (79.93 cm)
Dimensions(h):	2.69" (6.83 cm)	2.69" (6.83 cm)
Dimensions(d):	2.85" (7.24 cm)	3.07" (7.8 cm)

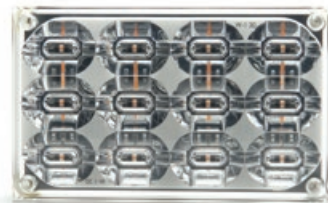
PERIMETER LIGHTING

6X4 SILICONE LIGHTS

BEST SELLING

mpower® 6X4

Light Types: Available for use as backup, backup with warning, scene, stop/tail/turn, turn and warning



Warning



Backup w/ Warning



Stop/Tail/Turn

Mount Types



Stud Mount



Quick Mount



Screw Mount

mpower 6x4 Inch Silicone Lights

Features:	Powerful lighting output at 180 degree viewing angles perfect for fire and EMS apparatuses
LED Color Capabilities:	All standard single, dual or split color warning, ● stop/tail, ● turn, ○ backup and ○ backup with single color warning
LED Color Options:	●, ●, ●, ●, ○
Light Sync:	Up to 24 lightheads (Sync 2)
Flash Patterns:	15
Dimensions(l):	6.37" (16.17 cm)
Dimensions(h):	4" (10.16 cm)
Dimensions(d):	1.1" (2.79 cm)
Mounts:	Stud, quick or screw mounts
Certifications:	SAE J595, CA Title 13, NFPA 1901, KKK-1822-F, FMVSS-108

● ● ● ● ○ To configure product to your exact needs, visit soundoffsignal.com or contact customer service.

6X4 SILICONE LIGHTS

mpower® 6X4

Stud Mounts

Warning	
12 LED, Single Color	EMPSBOC9D-(x)
24 LED, Dual Color	EMPSBOC9E-(y)
24 LED, Split Color	EMPSBOC9F-(y)
36 LED, Tricolor	EMPSBOC9G-(z)
Stop/Tail/Turn	
20 LED, Single Color, ●	EMPSBOC6Y-R
Turn	
20 LED, Single Color, ●	EMPSBOC9K-A
Backup	
18 LED, Single Color, ○	EMPSBOC9H-W
Backup with Warning, White Backup Operation	
28 LED, ● Warning	EMPSBOC9J-F
28 LED, ● Warning	EMPSBOC9J-E
28 LED, ● Warning	EMPSBOC9J-D

Quick Mounts

Warning	
12 LED, Single Color	EMPSBOC91-(x)
24 LED, Dual Color	EMPSBOC8Y-(y)
24 LED, Split Color	EMPSBOC8Z-(y)
36 LED, Tricolor	EMPSBOC90-(z)
Stop/Tail/Turn	
20 LED, Single Color, ●	EMPSBOC94-R
Turn	
20 LED, Single Color, ●	EMPSBOC95-A
Backup	
18 LED, Single Color, ○	EMPSBOC92-W
Backup with Warning, White Backup Operation	
28 LED, ● Warning	EMPSBOC93-F
28 LED, ● Warning	EMPSBOC93-E
28 LED, ● Warning	EMPSBOC93-D

Screw Mounts

Warning	
12 LED, Single Color	EMPSBOC96-(x)
24 LED, Dual Color	EMPSBOC97-(y)
24 LED, Split Color	EMPSBOC98-(y)
36 LED, Tricolor	EMPSBOC99-(z)
Stop/Tail/Turn	
20 LED, Single Color, ●	EMPSBOC9B-R
Turn	
20 LED, Single Color, ●	EMPSBOC9C-A
Backup	
18 LED, Single Color, ○	EMPSBOC92-W
Backup with Warning, White Backup Operation	
28 LED, ● Warning	EMPSBOAWTF
28 LED, ● Warning	EMPSBOAWTE
28 LED, ● Warning	EMPSBOAWTD

Replace (x), (y) and (z) in the Order Number for Standard Color Selection

Single Colors (x)	A= ● B= ● R= ● W= ○
Dual Colors (y)	D= ●○ E= ●○ F= ●○ J= ●●
Split Colors (y)	D= ●○ E= ●○ F= ●○ J= ●● K= ●● M= ●●
Tricolor (z)	6= ●●● 8= ●●○

mpower® 6X4 BEZELS

NEW



Heavy-duty, metal housings

mpower® 6x4 Bezels

Replace (x) for bezel finish = (B for Black, C for Chrome)

Single Bezel	PMP7BZL01(x)
Double Bezel	PMP7BZL12(x)
Triple Bezel	PMP7BZL13(x)
Quad Bezel	PMP7BZL14(x)

● ● ● ● ○ To configure product to your exact needs, visit soundoffsignal.com or contact customer service.

PERIMETER LIGHTING

7X3 SILICONE LIGHTS



Light Types: Available for use as backup, backup with warning, scene, stop/tail/turn, turn and warning



Warning



Backup w/ Warning



Stop/Tail/Turn

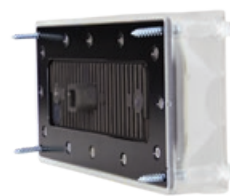
Mount Types



Stud Mount



Quick Mount



Screw Mount

mpower® 7x3 Silicone Lights

Features:	Powerful lighting output at 180 degree viewing angles perfect for fire and EMS apparatuses
LED Color Capabilities:	All standard single, dual or split color warning, ● stop/tail, ● turn, ○ backup and ○ backup with single color warning
LED Color Options:	●, ●, ●, ●, ○
Light Sync:	Up to 24 lighthead (Sync 2)
Flash Patterns:	15 warning, backup with warning, 4 turn, 1 stop/tail
Dimensions(l):	7.18" (18.54 cm)
Dimensions(h):	3" (7.62 cm)
Dimensions(d):	1" (2.54 cm) (without bezel)
Mounts:	Stud, quick or screw mounts
Certifications:	SAE J595, CA Title 13, NFPA 1901, KKK-1822-F, FMVSS-108



mpower® 7X3 BEZELS



Heavy-duty, metal housings

mpower® 7x3 Bezels

Replace (x) for bezel finish = (B for Black, C for Chrome)

Single Bezel	PMP8BZL01(x)
Double Bezel w/ 15 Degree Tilt	PMP8BZL32(x)
Double Bezel	PMP8BZL12(x)
Triple Bezel	PMP8BZL13(x)
Quad Bezel	PMP8BZL14(x)

● ● ● ● ○ To configure product to your exact needs, visit soundoffsignal.com or contact customer service.

7X3 SILICONE LIGHTS



Stud Mounts

Warning	
12 LED, Single Color	EMPSC07MH-(x)
24 LED, Dual Color	EMPSC07MJ-(y)
24 LED, Split Color	EMPSC07MK-(y)
36 LED, Tricolor	EMPSC07ML-(z)

Stop/Tail/Turn

18 LED, Single Color, ●	EMPSC07MP-R
-------------------------	-------------

Turn

18 LED, Single Color, ●	EMPSC07MQ-A
-------------------------	-------------

Backup

18 LED, Single Color, ○	EMPSC07MM-W
-------------------------	-------------

Backup with Warning (white warning)

28 LED, ● Warning and ○ Backup Operation	EMPSC07MN-F
--	-------------

28 LED, ● Warning and ○ Backup Operation	EMPSC07MN-E
--	-------------

28 LED, ● Warning and ○ Backup Operation	EMPSC07MN-D
--	-------------

Quick Mounts

Warning	
12 LED, Single Color	EMPSC07M0-(x)
24 LED, Dual Color	EMPSC07M1-(y)
24 LED, Split Color	EMPSC07M2-(y)
36 LED, Tricolor	EMPSC07M3-(z)

Stop/Tail/Turn

18 LED, Single Color, ●	EMPSC07M6-R
-------------------------	-------------

Turn

18 LED, Single Color, ●	EMPSC07M7-A
-------------------------	-------------

Backup

18 LED, Single Color, ○	EMPSC07M4-W
-------------------------	-------------

Backup With Warning (white warning)

28 LED, ● Warning and ○ Backup Operation	EMPSC07M5-F
--	-------------

28 LED, ● Warning and ○ Backup Operation	EMPSC07M5-E
--	-------------

28 LED, ● Warning and ○ Backup Operation	EMPSC07M5-D
--	-------------

Screw Mounts

Warning	
12 LED, Single Color	EMPSC07M8-(x)
24 LED, Dual Color	EMPSC07M9-(y)
24 LED, Split Color	EMPSC07MA-(y)
36 LED, Tricolor	EMPSC07MB-(z)

Stop/Tail/Turn

18 LED, Single Color, ●	EMPSC07ME-R
-------------------------	-------------

Turn

18 LED, Single Color, ●	EMPSC07MF-A
-------------------------	-------------

Backup

18 LED, Single Color, ○	EMPSC07MC-W
-------------------------	-------------

Backup With Warning (white warning)

28 LED, ● Warning with ○ Backup Operation	EMPSC07MD-F
---	-------------

28 LED, ● Warning with ○ Backup Operation	EMPSC07MD-E
---	-------------

28 LED, ● Warning with ○ Backup Operation	EMPSC07MD-D
---	-------------

Replace (x), (y) and (z) in the Order Number for Standard Color Selection

Single Colors (x)	A= ● B= ● R= ● W= ○
Dual Colors (y)	D= ●○ E= ●○ F= ●○ J= ●●
Split Colors (y)	D= ●○ E= ●○ F= ●○ J= ●● K= ●● M= ●●
Tricolor	6= ●●● 8= ●●○

Also Available!



Visit soundoffsignal.com or contact your sales representative for more information on this light.

● ● ● ● ○ To configure product to your exact needs, visit soundoffsignal.com or contact customer service.

PERIMETER LIGHTING

P-SERIES LIGHTS

6X4 P

Light Types: Available for use as backup, backup with warning, scene, stop/tail/turn, turn and warning



Backup & Warning

Dual or Split Warning

Stop/Tail/Turn



Lens Color Options

6x4 P	
Features:	Powerful lighting output, extremely functional and customizable to get the job done
LED Color Capabilities:	All standard single, dual or split color warning, ● stop/tail, ● turn, ○ backup and ○ backup with single color warning
LED Color Options:	●, ●, ●, ●, ○
Lens Color Options:	○, ●, ●, ●, ●
Light Sync:	Up to 24 lightheads (Sync 2)
Flash Patterns:	15
Dimensions(l):	6.4" (16.25 cm)
Dimensions(h):	3.9" (9.9 cm)
Dimensions(d):	1.0" (2.54 cm)
Mounting:	Stud or screw mounts
Certifications:	SAE J595, CA Title 13, NFPA 1901, KKK-1822-F, FMVSS-108

● ● ● ● ○ To configure product to your exact needs, visit soundoffsignal.com or contact customer service.

P-SERIES LIGHTS

6X4 P

Stud Mounts		Screw Mounts	
Warning			
12 LED Single Color (x = A, B, G, R, W) Warning, ○ Lens	EPSSBQJXA-(x)	12 LED Single Color (x = A, B, G, R, W) Warning, ○ Lens	EPSSBQJWVZ-(x)
12 LED Single Color ● Warning, ● Lens	EPSSBQJXB-A	12 LED Single Color ● Warning, ● Lens	EPSSBQJX1-A
12 LED Single Color ● Warning, ● Lens	EPSSBQJXC-B	12 LED Single Color ● Warning, ● Lens	EPSSBQJX2-B
12 LED Single Color ● Warning, ● Lens	EPSSBQJXD-G	12 LED Single Color ● Warning, ● Lens	EPSSBQJX3-G
12 LED Single Color ● Warning, ● Lens	EPSSBQJXE-R	12 LED Single Color ● Warning, ● Lens	EPSSBQJX4-R
24 LED Dual Color, ○ Lens	EPSSBOTFD-(y)	24 LED Dual Color, ○ Lens	EPSSBOTFB-(y)
24 LED Split Color, ○ Lens	EPSSBOTFE-(y)	24 LED Split Color, ○ Lens	EPSSBOTFC-(y)
Stop/Tail/Turn			
20 LED ● STT, ○ Lens	EPSSBQJXG-R	20 LED ● STT, ○ Lens	EPSSBQJX6-R
20 LED ● STT, ● Lens	EPSSBQJXH-R	20 LED ● STT, ● Lens	EPSSBQJX7-R
Turn			
20 LED ● Turn, ○ Lens	EPSSBQJXJ-A	20 LED ● Turn, ○ Lens	EPSSBQJX8-A
20 LED ● Turn, ● Lens	EPSSBQJXK-A	20 LED ● Turn, ● Lens	EPSSBQJX9-A
Backup			
18 LED ○ Backup, ○ Lens	EPSSBQJXF-W	18 LED ○ Backup, ○ Lens	EPSSBQJX5-W
Backup with Warning:			
28 LED ○ Backup, ● Warning	EPSSBQJFU-D	28 LED ○ Backup, ● Warning	EPSSBOPQO-D
28 LED ○ Backup, ● Warning	EPSSBQJFU-E	28 LED ○ Backup, ● Warning	EPSSBOPQO-E
28 LED ○ Backup, ● Warning	EPSSBQJFU-F	28 LED ○ Backup, ● Warning	EPSSBOPQO-F

Replace (x) and (y) in the Order Number for Standard Color Selection	
Single Colors (x)	A= ● B= ● G= ● R= ● W= ○
Dual Colors (y)	D= ●○ E= ●○ F= ●○ J= ●●
Split Colors (y)	D= ●○ E= ●○ F= ●○ J= ●● K= ●● M= ●●

6X4 P BEZELS



Heavy-duty, metal housings

6x4 P Bezels	
Replace (x) for bezel finish = (B for Black, C for Chrome)	
Single Bezel	PPS7BZL01(x)
Double Bezel	PPS7BZL12(x)
Triple Bezel	PPS7BZL13(x)
Quad Bezel	PPS7BZL14(x)

● ● ● ● ○ To configure product to your exact needs, visit soundoffsignal.com or contact customer service.

PERIMETER LIGHTING

P-SERIES LIGHTS

7X3 P

Light Types: Available for use as backup, backup with warning, scene, stop/tail/turn, turn and warning



Backup & Warning

Dual or Split Warning

Stop/Tail/Turn



Lens Color Options

7x3 P

Features:	Powerful lighting output, extremely functional and customizable to get the job done
LED Color Capabilities:	All standard single, dual or split color warning, ● stop/tail, ● turn, ○ backup and ○ backup with single color warning
LED Color Options:	●, ●, ●, ●, ○
Lens Color Options:	○, ●, ●, ●, ●
Light Sync:	Up to 24 lightheads (Sync 2)
Flash Patterns:	15
Dimensions(l):	7.25" (18.41 cm)
Dimensions(h):	3.1" (7.87 cm)
Dimensions(d):	1.0" (2.54 cm)
Mounting:	Stud or screw mounts
Certifications:	SAE J595, CA Title 13, NFPA 1901, KKK-1822-F, FMVSS-108

● ● ● ● ○ To configure product to your exact needs, visit soundoffsignal.com or contact customer service.

P-SERIES LIGHTS

7X3 P

Stud Mounts

Warning	
12 LED Single Color, ○ Lens	EPSSCOJXS-(x)
12 LED Single Color ● Warning, ● Lens	EPSSCOJXU-A
12 LED Single Color ● Warning, ● Lens	EPSSCOJXV-B
12 LED Single Color ● Warning, ● Lens	EPSSCOJXX-G
12 LED Single Color ● Warning, ● Lens	EPSSCOJXY-R
24 LED Dual Color, ○ Lens	EPSSCOTFN-(y)
24 LED Split Color, ○ Lens	EPSSCOTFP-(y)
Stop/Tail/Turn	
18 LED ● STT, ○ Lens	EPSSCOJYO-R
18 LED ● STT, ● Lens	EPSSCOJY1-R
Turn	
18 LED ● Turn, ○ Lens	EPSSCOJY2-A
18 LED ● Turn, ● Lens	EPSSCOJY3-A
Backup	
18 LED ○ Backup, ○ Lens	EPSSCOJXZ-W
Backup with Warning	
28 LED ○ Backup, ● Warning	EPSSCOQFW-D
28 LED ○ Backup, ● Warning	EPSSCOQFW-E
28 LED ○ Backup, ● Warning	EPSSCOQFW-F

Screw Mounts

Warning	
12 LED Single Color, ○ Lens	EPSSCOJY4-(x)
12 LED Single Color ● Warning, ● Lens	EPSSCOJY5-A
12 LED Single Color ● Warning, ● Lens	EPSSCOJY6-B
12 LED Single Color ● Warning, ● Lens	EPSSCOJY7-G
12 LED Single Color ● Warning, ● Lens	EPSSCOJY8-R
24 LED Dual Color, ○ Lens	EPSSCOTFL-(y)
24 LED Split Color, ○ Lens	EPSSCOTFM-(y)
Stop/Tail/Turn	
18 LED ● STT, ○ Lens	EPSSCOJYB-R
18 LED ● STT, ● Lens	EPSSCOJYC-R
Turn	
18 LED ● Turn, ○ Lens	EPSSCOJYD-A
18 LED ● Turn, ● Lens	EPSSCOJYE-A
Backup	
18 LED ○ Backup, ○ Lens	EPSSCOJYA-W
Backup with Warning	
28 LED ○ Backup, ● Warning	EPSSCOPPZ-D
28 LED ○ Backup, ● Warning	EPSSCOPPZ-E
28 LED ○ Backup, ● Warning	EPSSCOPPZ-F

Replace (x) and (y) in the Order Number for Standard Color Selection

Single Colors (x)	A= ● B= ● G= ● R= ● W= ○
Dual Colors (y)	D= ●○ E= ●○ F= ●○ J= ●●
Split Colors (y)	D= ●○ E= ●○ F= ●○ J= ●● K= ●● M= ●●

7X3 P BEZELS



Heavy-duty, metal housings

7x3 P Bezels

Replace (x) for bezel finish = (B for Black, C for Chrome)

Single Bezel	PPS8BZL01(x)
Double Bezel	PPS8BZL12(x)
Triple Bezel	PPS8BZL13(x)
Quad Bezel	PPS8BZL14(x)

● ● ● ● ○ To configure product to your exact needs, visit soundoffsignal.com or contact customer service.

PERIMETER LIGHTING

P-SERIES LIGHTS



9X7 P

Light Types: Available for use as scene and warning



Backup & Warning

Standard, cost-effective light to complete your apparatus build

9x7 P

Features: Versatile and simple to install with industry standard bolt patterns.

LED Color Capabilities:	Single
LED Color Options:	●, ●, ●, ●, ○
Lens Color Options:	○, ●, ●, ●, ●
Light Sync:	Up to 24 lightheads (Sync 2)
Flash Patterns:	15
Dimensions(l):	9" (22.86 cm)
Dimensions(h):	7" (17.78 cm)
Dimensions(d):	1" (2.54 cm)
Mounting:	Stud or screw mounts
Certifications:	SAE J595, CA Title 13, NFPA 1901, KKK-1822-F

Stud Mounts

Single Color Warning	
36 LED Single Color (x = A, B, G, R, W), ○ Lens	EPSSEOTF5-(x)
36 LED Single Color ●, ● Lens	EPSSEOTF6-A
36 LED Single Color ●, ● Lens	EPSSEOTF7-B
36 LED Single Color ●, ● Lens	EPSSEOTF8-G
36 LED Single Color ●, ● Lens	EPSSEOTF9-R

Screw Mounts

Single Color Warning	
36 LED Single Color (x = A, B, G, R, W), ○ Lens	EPSSEOTFO-(x)
36 LED Single Color ●, ● Lens	EPSSEOTF1-(x)
36 LED Single Color ●, ● Lens	EPSSEOTF2-(x)
36 LED Single Color ●, ● Lens	EPSSEOTF3-(x)
36 LED Single Color ●, ● Lens	EPSSEOTF4-(x)

Replace (x) in the Order Number for Standard Color Selection

Single Colors (x) A= ● B= ● G= ● R= ● W= ○



9X7 P BEZELS

9x7 P Bezels

Replace (x) for bezel finish = (B for Black, C for Chrome)

Single Bezel	PPS9BZL01(x)
--------------	--------------

● ● ● ● ○ To configure product to your exact needs, visit soundoffsignal.com or contact customer service.

RUNNING LIGHTS

SL RUNNING LIGHT



Extremely versatile solution bringing added intersection safety

SL Running Light

Feature:	Can be used for rocker panels, push bumpers, tailgates, headache racks, brow lights and more
LED Color Options:	●, ●, ●, ●, ○
Flash Patterns:	Up to 69 flash patterns
Dimensions(l):	15" (38.1 cm), 50" (127 cm), 61.4" (156 cm), 72.8" (184.9 cm)
Dimensions(h):	1.09" (2.76 cm) (all lengths)
Dimensions(d):	0.75" (1.9 cm) (all lengths)
Mount:	Bracket mount, brackets sold separately
Certifications:	SAE J595, CA Title 13

15" Model (1 module)

Dual color, ● ○	ESLRL1501F
Dual color, ● ○	ESLRL1501E
Dual color, ● ○	ESLRL1501D
Dual color, ● ●	ESLRL1501J
Tricolor, ● ● ○	ESLRL15018

61.4" Model (5 modules)

Dual color, ● ○	ESLRL6105F
Dual color, ● ○	ESLRL6105E
Dual color, ● ○	ESLRL6105D
Dual color, ● ●	ESLRL6105J
Tricolor, ● ● ○	ESLRL61058

72.8" Model (6 modules)

Dual color, ● ○	ESLRL7306F
Dual color, ● ○	ESLRL7306E
Dual color, ● ○	ESLRL7306D
Dual color, ● ●	ESLRL7306J
Tricolor, ● ● ○	ESLRL73068

Additional color and length configurations are available with an extended lead time. Please contact your sales rep to learn more.

Many vehicle-specific solutions available!

Vehicles supported:

- Chevrolet Tahoe
- Ford Police Interceptor Utility
- Dodge Durango
- And more...

Visit soundoffsignal.com to configure the product to your specific vehicle or contact your sales representative.

● ● ● ● ○ To configure product to your exact needs, visit soundoffsignal.com or contact customer service.

PERIMETER LIGHTING

SURFACE, DECK/GRILLE MOUNTS



nFORCE® SURFACE MOUNT LIGHT



nFORCE FIT LED Surface Mount Light

Features:	Intense forward and off-angle illumination.
LED Color Capabilities:	Single, dual, split, tricolor
LED Color Options:	●, ●, ●, ●, ○
Flash Patterns:	12 single, 14 dual, 14 tricolor patterns
Dimensions:	Surface Mount, Single
Dimensions(l):	5.0" (12.7 cm)
Dimensions(h):	1.72" (4.3 cm)
Dimensions(d):	1.50" (3.8 cm)
Mounting:	Screw mount
Certifications:	SAE J595, CA Title 13, EMC 72/245/EEC, ECE R10

Single	
6 LED, Single or Split Colors	ENFSSS1(x)
9 LED, Single Color	ENFSSS2(x)
12 LED, Single or Dual Colors	ENFSSS3(x)
18 LED, Tricolor	ENFSSS4(z)

nFORCE® DECK/GRILLE LIGHT



nFORCE Deck/Grille Mounts

Features:	Intense forward and off-angle illumination	
LED Color Capabilities:	Single, dual, tricolor	
LED Color Options:	●, ●, ●, ●, ○	
Flash Patterns:	12 single color and 14 dual/tricolor	
Dimensions:	Deck/Grille Mount, Single	Deck/Grille Mount, Dual Side-by-Side
Dimensions(l):	5.0" (12.7 cm)	9.50" (24.1 cm)
Dimensions(h):	1.88" (4.7 cm)	1.88" (4.7 cm)
Dimensions(d):	1.82" (4.3 cm)	1.82" (4.3 cm)
Mounting:	Deck/grille mount	
Certifications:	SAE J595, SAE J845, CA Title 13, ECE R10, EMC 72/245/EEC	

Deck/Grille Mounts

Single		Dual Side-by-Side	
6 LED, Single or Split Colors	ENFSGS1(x)	6 LED, Single or Split Colors	ENFDGS1(x)(x)
9 LED, Single Color	ENFSGS2(x)	9 LED, Single Color	ENFDGS2(x)(x)
12 LED, Single or Dual Colors	ENFSGS3(x or y)	12 LED, Single or Dual Colors	ENFDGS3(x)(x) or (JJ)
18 LED, Tricolor	ENFSGS4(z)	18 LED, Tricolor	ENFDGS4(z)

● ● ● ● ○ To configure product to your exact needs, visit soundoffsignal.com or contact customer service.

RECESS MOUNTS

nFORCE® RECESS MOUNT



nFORCE® OVAL RECESS



nFORCE LED Recess Mount Light / nFORCE 6" Oval Recess Mount Light

Features:	Intense forward and off-angle illumination.	
LED Color Capabilities:	Single, dual, split, tricolor	
LED Color Options:	●, ●, ●, ●, ○	
Flash Patterns:	12 single, 14 dual, 14 tricolor patterns	
Dimensions:	Recess Mount	Oval Recess Mount Light
Dimensions(l):	5.25" (13.34 cm)	7.75" (19.69 cm)
Dimensions(h):	2.25" (5.72 cm)	3.25" (8.26 cm)
Dimensions(d):	1.50" (3.8 cm)	1.65" (4.19 cm)
Mounting:	Recess mount	
Certifications:	SAE J595, CA Title 13, EMC 72/245/EEC, NFPA 1901	

Recess Mounts

Recess		6 Inch Oval	
6 LED, Single or Split Colors	ENFSRS1(x)	6 LED, Single or Split Colors	ENFSRV1(x)
9 LED, Single Color	ENFSRS2(x)	9 LED, Single Color	ENFSRV2(x)
12 LED, Single or Dual Colors	ENFSRS3(x) or (y)	12 LED, Single or Dual Colors	ENFSRV3(x) or (y)
18 LED, Tricolor	ENFSRS4(z)		

nFORCE Universal Accessories

License Plate	Surface vertical mount	PNFSLBRK2LPV
90 Degree Angle	Surface horizontal mount	PNFSLBRK190
Deck/Grille Mount	Single	PNFSLDGSB
	Dual	PNFSLDGDB

Replace (x), (y) or (z) in the Order Number for Standard Color Selection

6, 9, 12 LED Single Colors (x)	A= ● B= ● R= ● W= ○	6 Inch Oval Recess Mount	A= ● W= ○
6 LED Split Color (x)	D= ●○ E= ●○ F= ●○ J= ●●	6 Inch Oval Recess Mount	D= ●○ F= ●○
12 LED Dual Colors (y)	D= ●○ E= ●○ F= ●○ J= ●●	6 Inch Oval Recess Mount	D= ●○ F= ●○
18 LED Tricolors (z)	BRA= ●●● BRW= ●●○	6 Inch Oval Recess Mount	Not available

● ● ● ● ○ To configure product to your exact needs, visit soundoffsignal.com or contact customer service.

PERIMETER LIGHTING



WINDSHIELD MOUNTS

nFORCE® WINDSHIELD LIGHT



nFORCE Single Mount, nFORCE Dual Side-by-Side

Features:	Intense forward and off-angle illumination	
LED Color Capabilities:	Single, split, dual or tricolor capability (tricolor is not available for the 6 inch oval recess mount)	
LED Color Options:	●, ●, ●, ●, ○	
Light Sync	Up to 24 lighthoods (Sync 2)	
Flash Patterns:	12 single, 14 dual or 14 tricolor patterns (tricolor is not available for the 6 inch oval recess mount)	
Dimensions:	Windshield Mount, Single	Windshield Mount, Dual Side-by-Side
Dimensions(l):	6.80" (17.27cm)	11.35" (28.8 cm)
Dimensions(h):	1.43" (3.6 cm)	1.43" (3.6 cm)
Dimensions(d):	1.43" (3.6 cm)	5" (12.7 cm)
Mounting:	Windshield	
Certifications:	SAE J595, CA Title 13, EMC 72/245/EEC	

Windshield Mounts

Single, Stacked Mount Includes shroud, bracket and bare wires	Dual Side-by-Side, Permanent Mount Includes shroud, bracket and bare wires
6 LED, Single or Dual Colors ENFSWP1(x)	6 LED, Single or Dual Colors ENFDWP1(y)
9 LED, Single Color ENFSWP2(x)	9 LED, Single Color ENFDWP2(y)
12 LED, Single or Dual Colors ENFSWP3(x)	12 LED, Single or Dual Colors ENFDWP3(y)
18 LED, Tricolor ENFSWP4(z)	18 LED, Tricolor ENFDWP4(z)

Single, Suction Cup Mount Includes shroud, bracket and 12 volt cigar plug with 11.5' cord	Dual Side-by-Side, Suction Cup Mount Includes shroud, bracket and 12 volt cigar plug with 11.5' cord
6 LED, Single or Split Colors ENFSWS1(x) or (y)	6 LED, Single or Dual Colors ENFDWS1(x) or (y)
9 LED, Single Color ENFSWS2(x)	9 LED, Single Color ENFDWS2(x)
12 LED, Single or Dual Colors ENFSWS3(x) or (y)	12 LED, Single or Dual Colors ENFDWS3(x) or (y)
18 LED, Tricolor ENFSWS4(z)	18 LED, Tricolor ENFDWS4(z)

Replace (x), (y) or (z) in the Order Number for Standard Color Selection

6, 9, 12 LED Single Colors (x)	A= ● B= ● R= ● W= ○
6 LED Split Color (y)	D= ●○ E= ●○ F= ●○ J= ●●
12 LED Dual Colors (y)	D= ●○ E= ●○ F= ●○ J= ●●
18 LED Tricolors (z)	BRA= ●●● BRW= ●●○

● ● ● ● ○ To configure product to your exact needs, visit soundoffsignal.com or contact customer service.

UNDER MIRROR & SURFACE MOUNT LIGHTS

INTERSECTOR UNDER MIRROR INTERSECTOR SURFACE MOUNT



Under Mirror Mount Surface Mount

Features:	Emergency vehicle must-have—mounts under the vehicle's side mirror	Features:	No other light offers 180 degree output - specially designed reflector amplifies and throws the light at the perfect angle to increase visibility at intersections
Light Sync:	Up to 24 lighthoods (Sync 2)		
Flash Patterns:	12 single, 14 dual or 14 tricolor		
Dimensions:	Under Mirror	Surface Mount	
Dimensions(l):	2.78" (7.06 cm)	3.15" (8.0 cm)	
Dimensions(h):	1.04" (2.64 cm)	1.45" (3.68 cm)	
Dimensions(d):	2.49" (6.32 cm)	1.68" (4.27 cm)	
Mounting:	Under mirror or surface mount		
Certifications:	SAE J845, ECE R10.05		

Under Mirror Mount Surface Mount

8 LED, Single Color	ENT2B3(x)	8 LED, Single Color, Black Housing	ENT3B3(x)
16 LED, Dual Color	ENT2B3(y)	8 LED, Single Color, Chrome Housing	ENT3C3(x)
18 LED, Tricolor	ENT2B3(z)	8 LED, Single Color, White Housing	ENT3W3(x)
		16 LED, Dual Color, Black Housing	ENT3B3(y)
		16 LED, Dual Color, Chrome Housing	ENT3C3(y)
		16 LED, Dual Color, White Housing	ENT3W3(y)
		18 LED, Tricolor, Black Housing	ENT3B3(z)
		18 LED, Tricolor, Chrome Housing	ENT3C3(z)
		18 LED, Tricolor, White Housing	ENT3W3(z)

Replace (x), (y) or (z) in the Order Number for Standard Color Selection

8 LED Single Colors (x)	A= ● B= ● G= ● R= ● W= ○
16 LED Dual Color (y)	D= ●○ E= ●○ F= ●○ H= ●○ J= ●● K= ●● L= ●● M= ●● N= ●● P= ●●
18 LED Tricolors (z)	BAG= ●●● BAW= ●●○ BGW= ●●○ GAW= ●●○ RAG= ●●● RAW= ●●○ RBA= ●●● RBW= ●●○ RBG= ●●● RGW= ●●○

Intersector Universal Accessories

Under Mirror	Installation Mount (includes bracket and screws)	PNT1WRR1
Surface Adaptors	Under Mirror, Curved (sold in pairs)	PNT1CRV01

● ● ● ● ○ To configure product to your exact needs, visit soundoffsignal.com or contact customer service.

PERIMETER LIGHTING

FLUSH AND SURFACE MOUNT LIGHTS



XF FLUSH MOUNT LIGHT



XF Flush Mount Light

Single Colors	EXFS10001-(x)
Dual Colors	EXFS10002-(y)
Features:	Low profile design with advanced LED output
Light Sync:	Up to 24 lighthead (Sync 2)
Dimensions(l):	1.6" (4.06 cm)
Dimensions(h):	1.51" (3.84 cm)
Dimensions(d):	1.54" (3.91 cm)
Certifications:	SAE J595, ECE R65, ECE R10, CA Title 13, CISPR25

Replace (x) or (y) in the Order Number for Standard Color Selection

Single Colors (x)	A= ● B= ● R= ● W= ○
Dual Colors (y)	D= ●○ E= ●○ F= ●○ J= ●● K= ●● M= ●● P= ●●

BOLT 2



Bolt 2

Single Color	E1XS2SME5(x)X
Dual Colors	E1XS2SME5(y)
Features:	Bright, high-performing light in compact, versatile design
Flash Patterns:	8
Mounts:	Surface Mount, 90°
Dimensions(l):	15.5" (14 cm)
Dimensions(h):	5.5" (14 cm)
Dimensions(d):	0.48" (12.2 cm)
Certifications:	SAE J595, CA title 13, ECE R65, ECE R10, NFPA 1901

Replace (x) or (y) in the Order Number for Standard Color Selection

Single Colors (x)	A= ● B= ● R= ● W= ○ G= ●
Dual Colors (y)	AW= ●○ BA= ●● BW= ●○ GA= ●● RA= ●● RB= ●● RW= ●○

● ● ● ● ○ To configure product to your exact needs, visit soundoffsignal.com or contact customer service.

FLUSH AND SURFACE MOUNT LIGHTS

GHOST® SURFACE MOUNT LIGHT



Single Surface Mount

Features:	Bright, high-performing light in compact, versatile design
Number of LEDs:	6
Light Sync:	Up to 4 lighthead (Sync 1)
Flash Patterns:	33
Dimensions(l):	5.65" (14.35 cm)
Dimensions(h):	1.06" (2.6924 cm)
Dimensions(d):	1.8" (4.57 cm)
Mounts:	Surface
Certifications:	SAE J595, SAE 845, CA Title 13, EMC 72/245/EEC, ECE R65

Single

Single LED color, Black Housing, 10-30 Vdc	EGHST2(x)
--	-----------

White Spot

Single LED Color, ○, Spot, Black Housing	EGHSTS2W
--	----------

Split Color

Split LED Color, Black Housing	EGHST2(y)
--------------------------------	-----------

Single LED Color, ○, White Housing	EGHSTS2WW
------------------------------------	-----------

Single Stop/Tail

Single LED Color ●, Stop/Tail, Black Housing	EGHSTT2BB
Single LED Color ●, Stop/Tail, White Housing	EGHSTT2BW
Single LED Color ●, Stop/Tail, Black Housing	EGHSTT2RB
Single LED Color ●, Stop/Tail, White Housing	EGHSTT2RW

Replace (x) or (y) in the Order Number for Standard Color Selection

Single Colors (x)	A= ● B= ● G= ● R= ● W= ○
Split Colors (y)	D= ●○ E= ●○ F= ●○ H= ●○ J= ●● K= ●● L= ●● M= ●● N= ●● P= ●●

● ● ● ● ○ To configure product to your exact needs, visit soundoffsignal.com or contact customer service.

PERIMETER LIGHTING

MULTI-MOUNT LIGHTS

GHOST® MULTI-MOUNT LIGHT



Ghost Multi-Mount Light

Features:	Discrete and versatile – can be used on cars, trucks, SUVs, buses, trailers and more
LED Color Capabilities:	Single, Dual
LED Color Options:	●, ●, ●, ●, ●, ○
Number of LEDs:	6
Light Sync:	Up to 4 lightheads (Sync 1)
Flash Patterns:	33
Dimensions(l):	4.0" (10.16 cm)
Dimensions(h):	0.88" (2.24 cm)
Dimensions(d):	1.75" (4.45 cm)
Mounts:	Multi-Mount (Edge Mount, Permanent Mount & 3M Super Duty Adhesive Mount)
Certifications:	SAE J595, SAE J845, CA Title 13, EMC 72/245/EEC, ECE R65

Multi-Mount

Single LED, Black Housing	EGHST1(x)
Dual LED, Black Housing	EGHST1(y)

3M Super Duty Adhesive Mount

Single LED ●, Stop/Tail Light, Black Housing	EGHSTTA
Single LED ●, Stop/Tail Light, Black Housing	EGHSTTR
Single LED ○, Stop/Tail Light, Black Housing	EGHSTTW

Replace (x) or (y) in the Order Number for Standard Color Selection

Single Colors (x)	A= ● B= ● G= ● R= ● W= ○
Dual Colors (y)	D= ●○ E= ●○ F= ●○ H= ●○ J= ●● K= ●● L= ●● M= ●● N= ●● P= ●●

● ● ● ● ○ To configure product to your exact needs, visit soundoffsignal.com or contact customer service.

LED INSERT

UNIVERSAL UNDERCOVER LED INSERT



Universal UnderCover LED Insert

With 10 foot cable length:	ELUC3H010(x)	
With 25 foot cable length:	ELUC3H025(x)	
Features:	Features separate color control capability	
LED Color Capabilities:	Single, dual	
LED Color Options:	●, ●, ●, ●, ●, ○	
Light Sync:	Up to 24 lightheads (Sync 2)	
Flash Patterns:	12 single color or 14 dual color	
Dimensions:	Insert	Bezel
Dimensions(l):	2.2" (5.6 cm)	2.2" (5.6 cm)
Dimensions(d):	0.9" (2.3 cm)	1.65" (4.2 cm)
Dimensions(dia.):	1.5" (3.8 cm)	2.2" (5.6 cm)
Mounting:	Headlight and taillight mounts into 1" diameter cutout, Screw-in surface mount with optional bezel, Bezel mounts on 1.89" (4.8 cm) centers, Twist-in or push-in options are also available	

Universal UnderCover LED Insert Accessories

Surface Mount Bezels	Black (includes mounting gasket and hardware)	PLUC2HSB
	Chrome (includes mounting gasket and hardware)	PLUC2HSC
	White (includes mounting gasket and hardware)	PLUC2HSW
Lens	Extreme angle	PLUC2LN1E
	Horizontal	PLUC2LN1H
	Vertical	PLUC2LN1V

● ● ● ● ○ To configure product to your exact needs, visit soundoffsignal.com or contact customer service.

PERIMETER LIGHTING

WARNING LIGHTS

OVAL WARNING LIGHT



Oval Warning Light

Features:	Collimating lens design concentrates light into an intensified pattern of light – no dark spots or voids in light output
Flash Patterns:	8
Dimensions(l):	6.4" (16 cm)
Dimensions(h):	2.2" (0.6 cm)
Dimensions(d):	1.5" (0.4 cm)
Mounting:	Recess Mounting

Recess Mounting

6", Oval	
● LEDs/O Lens	EOVREBZA
● LEDs/O Lens	EOVREBZG
Certifications:	SAE J595

Warning Marker - Universal Accessory

Dress Ring:	Recess, 6 inch oval chrome	ECV06CHRM
-------------	----------------------------	-----------

ROUND WARNING LIGHT



Round Warning Light

Features:	Intense pattern of light with no dark spots.
Flash Patterns:	8
Dimensions(l):	4" (10.16 cm)
Dimensions(h):	4" (10.16 cm)
Dimensions(d):	1.5" (3.81 cm)
Mounting:	Recess Mounting

Recess

4", Round	
● LEDs/O Lens	ERDREBZA
● LEDs/O Lens	ERDREBZG
Certifications:	SAE J595

VEHICLE SPECIFIC ACCESSORIES

VEHICLE SPECIFIC ACCESSORIES



Many Vehicle-specific Solutions Available!



We offer a long list of accessories for several vehicle types (Chevrolet Tahoe, Ford Police Interceptor Utility, Dodge Durango, etc.). Common vehicle-specific solutions include:

- Hook kits for exterior lightbars
- Interior lightbars
- Speaker brackets
- Mirror mounts
- Rear spoiler brackets
- Grille brackets

To see a full listing visit SoundOff Signal's website.

PERIMETER LIGHTING

PERFORMANCE WHITE LIGHTING

PERFORMANCE LIGHTING



- Unique hybrid spot/driving beam pattern
- Great resistance to gravel pitting, scratching or cracking
- UV and thermal stability to prevent lens from yellowing

mpower® silicone LED lights are literally built for the rocks, dirt or whatever else you might stir up on your next job or adventure. With their optic-grade shatterproof silicone lenses, these lights won't break, scratch, crack or yellow from the sun.

mpower® 2X1



mpower 2x1

Without vehicle harness:	RTL-EMPR10033-WVV
With vehicle harness:	RTL-EMPR10038-WVV
Features:	Shatterproof silicone lens. Never cracks, never chips, resists fading or yellowing.
LED Color Options:	○
Beam Pattern:	Hybrid 10 degree spot/flood beam pattern
Dimensions(l):	2.61" (6.6 cm)
Dimensions(h):	1.2" (3.0 cm)
Dimensions(d):	3.23" (8.2 cm)

PERFORMANCE WHITE LIGHTING

mpower® 2X1 DUAL STACKED KIT



mpower 2x1 Dual Stacked

Without vehicle harness:	RTL-EMPR10034-WVV
With vehicle harness:	RTL-EMPR10039-WVV
Features:	Shatterproof silicone lens. Never cracks, never chips, resists fading or yellowing.
LED Color Options:	○
Beam Pattern:	Hybrid 10 degree spot/flood beam pattern
Dimensions(l):	2.61" (6.6 cm)
Dimensions(h):	2.33" (5.9 cm)
Dimensions(d):	3.23" (8.2 cm)

mpower® 6X1



mpower 6x1

Without vehicle harness:	RTL-EMPR20036-WVV
With vehicle harness:	RTL-EMPR20040-WVV
Features:	Shatterproof silicone lens. Never cracks, never chips, resists fading or yellowing.
LED Color Options:	○
Beam Pattern:	Hybrid 10 degree spot/flood beam pattern
Dimensions(l):	6.64" (16.9 cm)
Dimensions(h):	1.2" (3.0 cm)
Dimensions(d):	3.48" (8.8 cm)

LIGHTBARS

DIRECTIONAL WARNING

PERIMETER LIGHTING

CONTROL SYSTEMS

SIRENS & SPEAKERS

ELECTRONICS

BEACONS

WORK AREA

LIGHTBARS

DIRECTIONAL WARNING

PERIMETER LIGHTING

CONTROL SYSTEMS

SIRENS & SPEAKERS

ELECTRONICS

BEACONS

WORK AREA



CONTROL SYSTEMS

SoundOff
Signal ®

CONTROL SYSTEMS

bluePRINT® CONTROL SYSTEM

bluePRINT® CONTROL SYSTEM

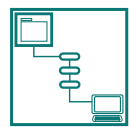


Take Total Control of Your Warning System!

bluePRINT provides benefits for installers as well. Upfits become more standardized, reliability is improved and accessories like relays, diodes, timers and fuse blocks are often eliminated. bluePRINT's LINK, a plug-n-play CANbus interface, protects vehicle circuit integrity by eliminating the time and risk of modifying original vehicle wiring.

A bluePRINT-equipped vehicle is state-of-the-art and uses vehicle data and other inputs to inform and modify the warning system profile in real time. Agencies benefit with improved policy and law compliance, situation-specific warning profiles, automatic dimming and flash rate adjustments and diagnostics.

SoundOff lightbars integrate fully and easily into the system. Secondary lights become remote units, as the system will control their functions, including cruise, low power and flash patterns. Accessories, like cameras, radios and radars, can be powered through bluePRINT to eliminate parasitic drains and provide load shed protection.



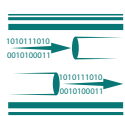
bluePRINT's Windows-based app allows you to configure your system, name and assign input/output relationships, create logic functions and prioritize system actions with the click of a mouse. Once configured, the program is simply uploaded to bluePRINT allowing for rapid multi-vehicle cloning. Full software support including training is available.



Real-time Windows PC-to-vehicle diagnostic connection provides immediate input/output and CANbus status. Technicians can view current and historical faults, reset outputs, and monitor current. Additionally, all inputs and outputs can be toggled on or off for validation testing of programmed functions and connected devices. As many as five Remote Nodes can be used to simplify and consolidate wiring. bluePRINT can even run two control heads to provide added flexibility.



SoundOff Signal's exclusive Sync technology provides true multi-vehicle flash pattern synchronization to improve warning messages. No ongoing fees, no need for connectivity and minimal hardware gets you up and running quickly.



Scalable and capable, bluePRINT offers up to 82 outputs, 50 inputs, 24 virtual inputs, and 450 amps of power distribution to handle any task. More than 50 vehicle CANbus signals are available to work.

bluePRINT 500 SERIES CONTROL SYSTEM

bluePRINT® CONTROL SYSTEM

Training Certification Required for bluePRINT Product

Due to the advanced nature of the bluePRINT system and vast array of modules it is required to take a training certification course to understand how the system operates.

Improve Safety and Efficiency.
Eliminate Point-to-Point Wiring.
Improve System Reliability and Convenience.



bluePRINT Central Controller

- bluePRINT Central Controller requires the SoundOff Central® App



Remote Node

- Easily expand bluePRINT's capabilities with a Remote Node. Including four 10-amp solid state switchable outputs, six 5-amp solid state switchable outputs and four positive or negative activated inputs programmable through SoundOff Central.



Input Node

- The Input Node provides 20 discrete wired inputs for bluePRINT



Either the Central Controller or the 500 Series Control System is needed to control the bluePRINT system.

CONTROL SYSTEMS

bluePRINT CONTROL SYSTEM

bluePRINT® 500 SERIES CONTROL SYSTEM

BEST SELLING

Features

- Flash and dimming options (15 internal solid state outputs)
- Load Shed
- Matrix programming
- Scalable architecture allows the addition of up to 50 discrete inputs, 24 OBD inputs and 68 outputs
- Control of two lightbars without the need for an external breakout box, or control additional lightbars using external BOBs
- USB programmability
- Together with software app, allows standard siren to be fully expandable and customizable. Also allows real time diagnostics and firmware updates
- Utilizes SoundOff Central bluePRINT Software

Enhanced Output/Input Capability

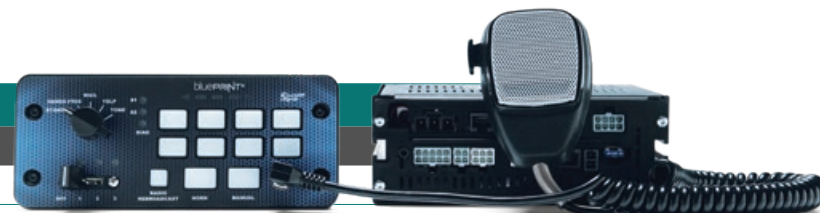
- 18 outputs
- 15 of the outputs are solid state, which can be flashed/dimmed and include diagnostic and self-protection features
- Up to 75 amps total internal switching

Additional

- 100 watt dual tone and 200 watt versions
- New mechanical tones
- Radio rebroadcast input
- Allows simultaneous use of two control panels with independent microphone inputs
- Improved audio quality with high capacitance internal filtering
- Available with Rotary, Push Button or Handheld Control Panels
- bluePRINT Announce with cabin and speaker audio message playback

Remote

Button	
100 Watt	ENGSA5100RSP
200 Watt	ENGSA5200RSP
Knob	
100 Watt	ENGSA5100RSR
200 Watt	ENGSA5200RSR



Knob option shown.

Console

Button	
100 Watt	ENGSA5100CSP
200 Watt	ENGSA5200CSP
Knob	
100 Watt	ENGSA5100CSR
200 Watt	ENGSA5200CSR



Button option shown.

Handheld

100 Watt	ENGSA5100HPP
200 Watt	ENGSA5200HPP



bluePRINT® CONTROL SYSTEM

bluePRINT® CONTROL SYSTEM

Remote Control

- Eight auxiliary buttons for one-touch programming
- Three-position slide switch for convenient switching



bluePRINT 200 Series Compact Siren

- 100 watt siren
- Compact with extreme audio output
- Can be installed in various tight engine compartments



Total System Inputs

Up to 51 Total Inputs	Central Controller or 500 Control System Ignition Input
	Remote Node: 4 each (up to 5 remote nodes can be used throughout vehicle)
	500 Series Control System: 10 inputs

Total System Outputs

Up to 86 Total Outputs	Central Controller: up to 4 constant on and 20 programmable outputs
	Remote Nodes: 10 each (up to 5 remote nodes can be used throughout vehicle)
	400 Series PA: 12 non-flashing programmable relay outputs; 3 are 20 Amp outputs
	500 Series Siren/Control System: 15 solid state and 5 Relay

Total Switching Current

Up to 450 Amps Total	Central Controller: 100 Amp total
	Remote Node: 50 Amp each (up to 5 nodes)
	400 Series PA: 100 Amp total
	500 Series Control System: 75 Amp total

SoundOff Central Software Requirements

PC or Tablet (used only for initial programming and diagnostics)	Windows 7 SP1 or later
	Pentium 1GHz or higher
	Minimum 512 MB of RAM
	Minimum disk space of 5 GB
	NET 4.5 Library (will be prompted to download if not already installed, .Net 4.6)
	USB 1.1 or higher, cable with Type B plug

CONTROL SYSTEMS

bluePRINT® CONTROL SYSTEM

bluePRINT® LINK MODULE

The same power of the original bluePRINT Link®, but now in a smaller package. Vehicle-specific harnesses available to meet your specific fleet needs.



Micro Module



Central Cable



Vehicle Specific Network Cable

For a full list of vehicles makes/models and to help identify current part numbers, please visit our Dealer Portal Vehicle Lookup at: soundoffsignal.com/dealer-portal/blueprint/

Many vehicle-specific solutions available!



Vehicles supported:

- Chevrolet Tahoe, Silverado and more!
- Ford Police Interceptor Utility, Expedition, F-Series, Mustang Mach-E and more!
- Dodge Durango, Charger and more!

Visit soundoffsignal.com to configure the product to your specific vehicle or contact your sales representative.

bluePRINT® CONTROL SYSTEM

bluePRINT® SYNC



Features and Requirements

What is bluePRINT Sync®?

- bluePRINT Sync is an add-on component for the bluePRINT 3 System
- It provides true warning system coordination between vehicles
- Sync-equipped emergency vehicles will automatically flash in perfect timing when using the same pattern
- Because of bluePRINT's flexibility in programming, single and multi-color patterns can be set to match or be different based on environmental and operator variances
- When matched with bluePRINT LINK, Sync becomes the industry's first lighting sync system that can be programmed to automatically change colors, patterns or intensities based on input from the vehicle such as speed, and ambient lighting

Why use bluePRINT Sync?

- Improved warning messages. Slow, medium or fast patterns are much more effective and noticeable when multiple vehicles are utilizing synchronized patterns
- Reduced distractions and confusion of multiple, random flashing lights. Approaching drivers can better judge the emergency vehicle's status
- Improved work area visibility for officers and other roadway users
- Enhanced professional image of all warning or response vehicles on a scene
- Enhanced tactical presence of police by calming scenes and implying control

How Does it Work?

- bluePRINT Sync utilizes GPS technology to keep patterns in sync. Car-to-Car communication is not necessary with this technology
- Using GPS technology means there is no required distance for vehicles to synchronize patterns. They are always in sync, no matter how far they are from one another
- Since bluePRINT Sync works in the background to synchronize patterns, there are ideas that should be discussed with bluePRINT users and programmers regarding the best way to utilize the technology

Hardware Requirements	Only a bluePRINT Central Controller or 500 Control System is required for use with bluePRINT Sync	
Software Requirements	All programming for bluePRINT require access to the bluePRINT Configuration Software. Sync is supported in bluePRINT version 3.8.2 and newer, and SoundOff Central	
System Requirements	bluePRINT 3 app or SoundOff Central must be utilized to configure the system. Central controller must have v3.08 or later installed	
Dimensions:	Module	Antenna Base
Dimensions(l):	3.4" (8.6 cm)	1.6" (4.0 cm)
Dimensions(h):	0.9" (2.2 cm)	0.4" (1.0 cm)
Dimensions(d):	1.6" (4.1 cm)	1.5" (3.7 cm)

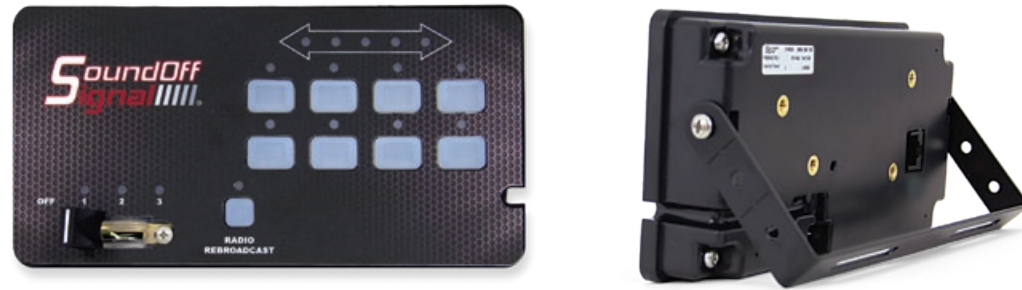
The bluePRINT Micro Firmware can only be field updated with the ENGLNDH002 programming harness. Aftermarket cables should not be used as they can leave the unit inoperable. bluePRINT Micro requires SoundOff Central bluePRINT Software or bluePRINT 3 Software.

CONTROL SYSTEMS

SOUNDOFF SIGNAL - CONTROL SYSTEM



EIGHT BUTTON CONTROLLER



Remote mounted controller and amplifier with lighting control.

Product #: ETCPRSP01

Features

- Functions include lighting controls, PA, radio rebroadcast, button programmability and back light control
- Three main 20 amp outputs and nine auxiliary 10 amp outputs, each internally fused
- Perfect addition to a utility vehicle that requires a slide style control for warning lights and additional controls for work and scene lights
- Main control box has built in protection against over and under voltage as well as short circuits or reversed polarity
- Panel features a toggle-able eight-second buzzer alert to notify the operator when anything is active
- Similar to the 400 series in operation
- For those converting emergency vehicles to public service aid - this is a direct swap to a 400 series siren system
- Eight Button Controller Kit includes panel, amplifier, microphone, bracket and accessories

Dimensions:	Handheld Portal	Remote Amplifier / Relay
Dimensions(l):	6.98" (17.73 cm)	7" (17.80 cm)
Dimensions(h):	3.51" (8.92 cm)	2.62" (6.66 cm)
Dimensions(d):	1.17" (2.98 cm)	6.51" (16.54 cm)

SOUNDOFF SIGNAL - CONTROL SYSTEM

Eight Button Controller and Power Module

Multi-purpose

ETCPMP801



Eight Button Controller, Low Current

Multi-purpose, Low-current

ETCPMP802



Features:

- Eight button programming and directional arrow function
- Eight switch control panel with three 10 amp and five 0.2 amp outputs for auxiliary device power or function activation (multi-purpose)
- Eight switch control panel with three 0.2 amp and four 0.1 amp outputs for auxiliary device power or function activation (multi-purpose, low current)
- Back lit rubber touch buttons
- Suction mount bracket and hardware included

Dimensions:	Power Module	Control Panels
Dimensions(l):	4.4" (11.2 cm)	3.81" (9.69 cm)
Dimensions(h):	3.5" (9 cm)	2.7" (6.88 cm)
Dimensions(d):	1.05" (2.67 cm)	1" (2.55 cm)

LIGHTBARS

DIRECTIONAL WARNING

PERIMETER LIGHTING

CONTROL SYSTEMS

SIRENS & SPEAKERS

ELECTRONICS

BEACONS

WORK AREA

LIGHTBARS

DIRECTIONAL WARNING

PERIMETER LIGHTING

CONTROL SYSTEMS

SIRENS & SPEAKERS

ELECTRONICS

BEACONS

WORK AREA



SIRENS AND SPEAKERS

SoundOff
Signal |||||®

SIRENS & SPEAKERS

REMOTE, CONSOLE & HANDHELD SIRENS

nERGY 400 SERIES

Remote

Button	
100 Watts	ETSA481RSP
200 Watts	ETSA482RSP
Knob	
100 Watts	ETSA481RSR
200 Watts	ETSA482RSR



Console

Button	
100 Watts	ETSA481CSP
200 Watts	ETSA482CSP
Knob	
100 Watts	ETSA481CSR
200 Watts	ETSA482CSR



Handheld

100 Watt	ETSA461HPP
200 Watt	ETSA462HPP
100 Watt (13 feet coil cable length)	ETSA461HPP-EXT
200 Watt (13 feet coil cable length)	ETSA462HPP-EXT



Note: 2 speakers required with the 200 watt version sirens.

Features

Remote, Console and Handheld Sirens

- 200 watt sirens feature dual-tone capability to deliver two siren tones at once to provide officers with extreme "traffic moving" capability
- Designed with extra large buttons and adequate spacing, which helps reduce accidental button activation
- Provides up to nine 10 amp and three 20 amp outputs with internal fuses for powering solenoids (i.e. gun lock) or supplying power and signaling to other on board peripherals (printer, radar, GPS, etc.)
- Built-in protection against over/under voltage, short circuit and reverse polarity

Remote Sirens

- Remote knob siren includes a removable microphone with quarter inch plug
- Hands-free feature allow siren tones to be cycled or canceled by pressing the horn button when the horn-ring circuit is connected

*For service parts such as harness kits, replacement knobs, mounting brackets and more, visit soundoffsignal.com

REMOTE, CONSOLE & HANDHELD SIRENS

nERGY 400 SERIES

Features (continued)

Console Sirens

- Unlike other competitors, nERGY offers two console versions. One version has a five position rotary switch and the other features a four push button switch
- Horn ring scroll provides ability to quickly change tones with the tap of the horn

Handheld Siren

- Provides unique advantages unlike any product on the market today: LED, alley and arrow handheld switch indicators for convenient viewing and extensive programmability
- Horn ring scroll provides ability to quickly change tones with the tap of the horn

Specifications

Watts:	100 and 200 Watts (2 speakers required with the 200 watt version sirens)	
Dimensions:	Control Panel	Amplifier/Relay
Dimensions(l):	3.51" (8.92 cm)	2.62" (6.66 cm)
Dimensions(h):	6.98" (17.73 cm)	7" (17.80 cm)
Dimensions(d):	1.17" (2.98 cm)	6.51" (16.54 cm)

FR100 SERIES SIREN

Compact, cost-effective and easy to use siren with PA function.

NEW

Product #: ETSAFR100

Features

- Full function siren for use with one or two 100 watt speakers
- Horn and manual button plus horn ring transfer input
- Large buttons and rotary knob for easy operation even with gloves
- Up to 24 selectable tones including dedicated mechanical tone button
- Hands-free operating mode

Specifications

Watts:	100 and 200 Watts (2 speakers required with the 200 watt version sirens)
Dimensions(l):	3.51" (8.92 cm)
Dimensions(h):	6.98" (17.73 cm)
Dimensions(d):	1.17" (2.98 cm)
Certifications:	SAEJ849, CA Title 13, ECE R10 (when used with SoundOff Signal speakers)



SIRENS & SPEAKERS

REMOTE SIREN

200 SERIES

PA Function

Remote Amplifier and Remote Switch Panel

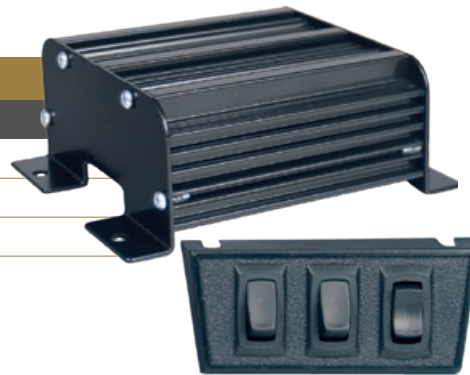
Single 100 Watt (connector sold separately)	ETSA200R-PA
Molex Connector and Mating Harness is Weatherproof	ETSA200RA-PA
Delphi Connector and Mating Harness	ETSA200RV-PA



Compact

Remote Amplifier and Remote Switch Panel

100 Watt	ETSA200R
Molex Connector and Mating Harness	ETSA200RA
Delphi Connector and Mating Harness	ETSA200RV



Features

PA Function

- The microphone includes a pre-amp, 15 feet of power and signal cable, adjustable gain and a three-pin removable connector
- The pre-amp features an additional gain adjustment

Compact

- Compact siren has a small, remote amplifier to fit tight spaces for undercover vehicles or motorcycles

PA Function and Compact

- Class D technology with high speed digital switching provides higher efficiency, less current draw and better reliability
- Operates a single 100 watt speaker or dual 58 watt speaker (compact, remote amplifier only)
- Five warning tones (up to three tones can be activated) wail, yelp, piercer, hi-lo or super hi-lo, an additional four air horn tones available
- Horn ring (hands free operation) controls the tones and can be programmed to broadcast warning or air horn tones.
- Volume can be set for the public address (PA) and radio rebroadcast within the 200R amplifier; this feature can be pre-set to a desired level during installation
- Park/kill feature disables the siren when the vehicle is placed in park
- Built-in protection against over/under voltage, over temperature, short circuit and reverse polarity
- Hermetically sealed, providing protection in wet areas

Specifications

Watts:	100 Watts
Dimensions(l):	5.4" (13.7 cm)
Dimensions(h):	2.3" (5.8 cm)
Dimensions(d):	4.6" (11.6 cm)
Certifications:	SAE J1849, CA Title 13 when used with SoundOff Signal speakers, ECE R10.05

COMPOSITE SPEAKER

100J SERIES

100J Series Composite Speaker

Two-year warranty	ETSS100J
Five-year warranty	ETSS100J5

Shown with bail bracket.



100J Series Composite Speaker Features

- Composite housing creates electrical isolation from vehicle chassis to extend product life
- Weather tested, glass reinforced nylon material will not corrode like a traditional aluminum speaker
- Designed for passive water and moisture egress
- Designed for clear, powerful output using neodymium magnet
- Compact design with powerful 100 watt output
- Ferro-fluid filled coil
- Includes universal bail bracket
- Meets SAE J1849 CA Title 13, Class A when used with SoundOff Signal siren amplifier

Specifications

Watts:	100 Watts	
Dimensions:	Without Bracket	With Bracket
Dimensions(l):	6.75" (17.1 cm)	6.88" (17 cm)
Dimensions(h):	6.75" (17.1 cm)	7.5" (19 cm)
Dimensions(d):	3.5" (8.9 cm)	3.5" (8.9 cm)
Warranty:	ETSS100J Two-year	ETSS100J5 Five-year

Many vehicle-specific solutions available!



Vehicles supported:

- Chevrolet Tahoe, Silverado and more!
- Ford Police Interceptor Utility, F-150, Escape and more!
- Dodge Durango, Charger and more!

Visit our website or contact customer service for a full listing.

LIGHTBARS

DIRECTIONAL WARNING

PERIMETER LIGHTING

CONTROL SYSTEMS

SIRENS & SPEAKERS

ELECTRONICS

BEACONS

WORK AREA

LIGHTBARS

DIRECTIONAL WARNING

PERIMETER LIGHTING

CONTROL SYSTEMS

SIRENS & SPEAKERS

ELECTRONICS

BEACONS

WORK AREA

COMPOSITE SPEAKER

100U SERIES



100U Series Speaker

Watts: 100 Watts ETSS100U

100U Series Speaker Features

- Composite housing creates electrical isolation from vehicle chassis to extend product life
- Weather tested, reinforced nylon material will not corrode
- Improved design for passive water and moisture egress
- Includes universal bail bracket
- Meets SAE J1849 CA Title 13, Class A when used with SoundOff Signal siren amplifier
- Meets GSA requirements

Dimensions:	Without Bracket	With Bracket
Dimensions(l):	6.22" (15.8 cm)	6.9" (17.4 cm)
Dimensions(h):	6.22" (15.8 cm)	7.1" (18.1 cm)
Dimensions(d):	3.3" (8.6 cm)	3.3" (8.9 cm)

Many vehicle-specific solutions available!



Vehicles supported:

- Chevrolet Tahoe, Silverado and more!
- Ford Police Interceptor Utility, F-150 and more!
- Dodge Durango, Ram 1500 and more!
- And more...

Visit our website or contact customer service for a full listing.

SIREN SYSTEM

LF AFTERSHOCK

Siren System, Includes Universal Bracket

100 Watt Speaker, 200 Watt Amplifier ETSKLF100

Two (2) 100 Watt Speakers, 200 Watt Amplifier ETSKLF200

Speaker, Includes Universal Bracket

Low Frequency Speaker, 100 Watt ETSSLF100



100U Series Speaker Features

- Provides highly effective omni-directional low frequency warning sound waves to aid in traffic clearing
- Ideal for areas with heavy traffic and busy intersections
- Includes universal bracket

Dimensions:	Siren	Dimensions:	Speaker
Dimensions(l):	4.7" (11.9 cm)	Dimensions(h):	8.5" (21.6 cm)
Dimensions(h):	2.4" (6 cm)	Dimensions(dia):	7.2" (18.4 cm)
Dimensions(d):	5" (12.7")		

Many vehicle-specific solutions available!



Vehicles supported:

- Chevrolet Tahoe, Silverado and more!
- Ford Police Interceptor Utility, F-150 and more!
- Dodge Charger, Ram 1500 and more!

Visit our website or contact customer service for a full listing.



ELECTRONICS

SoundOff
Signal |||||®

FLASHERS

LED Light

Two Output LED Flasher ETFFC02LED

- 3 amps per channel (2)
- Thirteen user selectable flash patterns
- For use with LED lights only
- 10-16Vdc, 12" wire leads



Headlight

Two Output Isolation Flasher ETHFSS-SP-ISO

- 9.5 amps per channel (2)
- Seven user selectable flash patterns
- For use with halogen lights only
- 10-16Vdc, 18" wire leads



Alternating Taillight (Flashback)

Four Output Isolated Taillight Flasher ETFBSSN-P

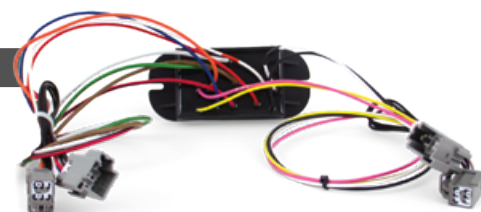
Four Output Isolated Taillight Flasher with Amp Connector and Fleet Harness ETFBANFL

- 5 amps per channel (4) with an auxiliary output
- 2.4 FPS
- 10-16Vdc, 18" wire leads



Ford Police Interceptor Utility, 2016-2023 ETFFUT-16

- Alternating taillight flasher (flashback) with vehicle-specific connectors
- No cutting / splicing of OEM wiring needed
- 2.4 FPS
- 10-16Vdc

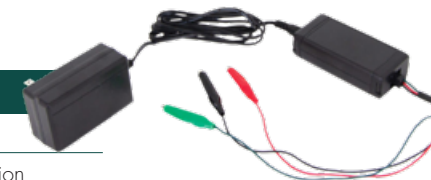


SWITCHES & ALARMS

ConfigureIT System

Bluetooth Module ECTBM001

- Easily program flash patterns, color, intensities and more via an app and Bluetooth connection
- Reduces install time
- Eliminates tapping of wires
- Save configurations for repetitive lights for multiple/reused configurations



Direction Arrow Switch

Arrow Switch ETSWDASO1

- Activate directional communication functions at the touch of a button
- Seven programmable warning modes with a fully illuminated display



2000



2200



3500

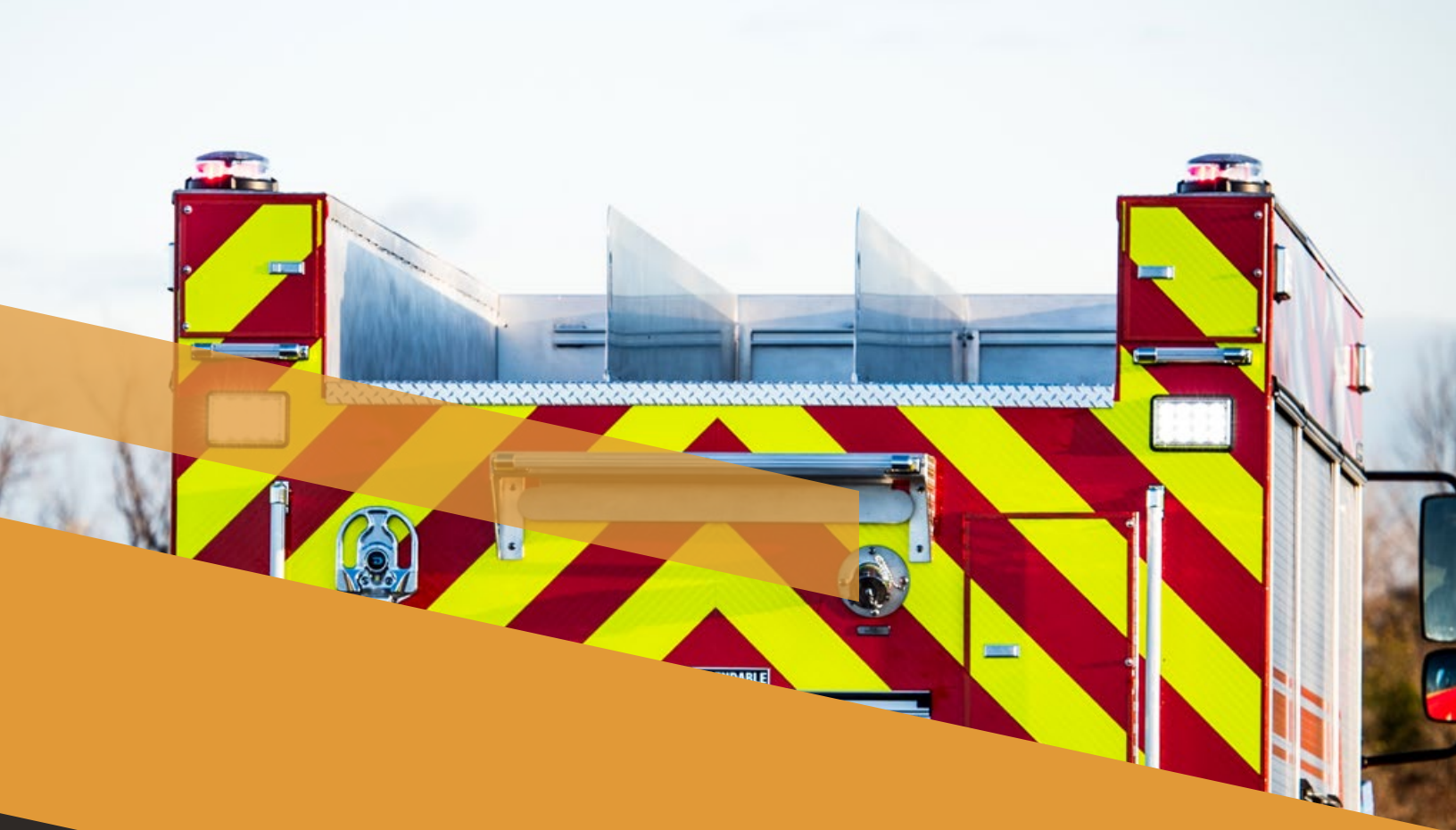
reVerb Backup Alarm

With optional wire leads or ground clip ETBASS2000

With wire leads for easy installation ETBASS2200

Self-adjusting sound output ETBASS3500

- Ideal fit for heavy equipment working under strenuous conditions
- Vibration resistant
- Universal mounting capability



BEACONS

SoundOFF
Signal |||||®

BEACONS

LED BEACONS

4200 SERIES



Superior optics and optimal light distribution

Features:

- Lens with UV inhibitor prevents sun fade
- Rated to last 20,000+ hours
- Heavy duty cast aluminum base

LED Color Options:	●	
Lens Color Options:	● ○	
LED count:	8	
Flash Patterns:	11 flash patterns	
Dimensions:	Low dome with base:	High dome with base:
Dimensions(h):	5" (12 cm)	6.8" (17 cm)
Dimensions(base dia.):	6.3" (16 cm)	6.3" (16 cm)
Mounts:	Flat/pipe mount or magnetic mount	
Certifications:	SAE J845	

Flat/Pipe Mount

Type	LED Color	Lens Color	Part #
Low Dome	●	●	ELB42BCLOAA
	●	○	ELB42BCLOAC
High Dome	●	●	ELB42BCH0AA
	●	○	ELB42BCH0AC

Magnetic Mount

Type	LED Color	Lens Color	Part #
Low Dome	●	●	ELB42BML+AA
	●	○	ELB42BML+AC
High Dome	●	●	ELB42BMH+AA
	●	○	ELB42BMH+AC

● ● ● ● ○ To configure product to your exact needs, visit soundoffsignal.com or contact customer service.

LED BEACONS

4500 SERIES



Bright signal in the darkest conditions or inclement weather

Features:

- Lens with UV inhibitor prevents sun fade

Flash Patterns:	8 flash patterns	
Dimensions:	Low profile with base	High dome with base
Dimensions(h):	5" (12 cm)	6.8" (17 cm)
Dimensions(dia.):	6.3" (16 cm) base	6.3" (16 cm) base
Mounts:	Flat/pipe mount or magnetic mount	
Certifications:	SAE J845	

Flat/Pipe Mount

Low Dome	ELB45BCL0(y)
High Dome	ELB45BCH0(y)

Replace (y) in the LED Color and Dome Color Selection.

Magnetic Mount

Low Dome	ELB45BML+(y)
High Dome	ELB45BMH+(y)

Replace (y) in the LED Color and Dome Color Selection.

Replace (y) in the Order Number for LED Color and Dome Color Selection

AA = ● LEDs, ● Dome	FC = ● LEDs, ○ Dome	PC = ● and ● LEDs, ○ Dome (flat/pipe mount only)
AC = ● LEDs, ○ Dome	GC = ● LEDs, ○ Dome	RC = ● LEDs, ○ Dome
BC = ● LEDs, ○ Dome	GG = ● LEDs, ● Dome	RR = ● LEDs, ● Dome
BB = ● LEDs, ● Dome	JC = ● and ● LEDs, ○ Dome (low dome only)	WC = ○ LEDs, ○ Dome

4200 & 4500 Series Accessories

Semi-truck Mirror Application Beacon Bracket Kit, Flat/Pipe Mount (includes mounting hardware)

1" diameter tube	PBCBK001
1¼" diameter tube	PBCBK002
1½" diameter tube	PBCBK003

Dust Cover	6" height	E360DC6
Branch Guard	4" height	PESB41BG4
	6" height	PESB41BG6



Beacon Bracket Kit

● ● ● ● ○ To configure product to your exact needs, visit soundoffsignal.com or contact customer service.

BEACONS

LED BEACONS



nROADS BEACONS



nROADS Beacons

High Dome	ENRBCSHCD*
Low dome	ENRBCSLCD*

Features

- Premium aluminum base with durable polycarbonate lens

LED Color Functionality:	Single, dual, tricolor	
LED Color Options:	●, ●, ●, ●, ○	
Lens Color Options:	○, ●, ●	
Flash Patterns:	44; 10 total scene, low power, and cruise modes	
Light Sync:	Up to 24	
Dimensions:	Low Dome	High Dome
Dimensions(h):	3.6" (9.25 cm)	5.3" (13.4 cm)
Dimensions(dia.):	8.6" (21.8 cm)	8.6" (21.8 cm)
Mounts:	Permanent mount, Magnetic mount (magnetic includes 10 foot cigar plug cord with integrated 2-button rocker switch panel), 1" NPT pipe mount	
Certifications:	SAE J845, CA Title 13	

Low Dome, Flat/Pipe Mount

LED Count	Color Selections	Dome Colors	SAE J845 Certified
3 LED	Single Color, ● LEDs	●	Class 2
3 LED	Single Color, ● LEDs	○	Class 2
6 LED	Single Color, ● LEDs	●	Class 1
6 LED	Single Color, ● LEDs	○	Class 1
12 LED	Single Color, ● LEDs	●	Class 1
12 LED	Single or Dual Colors, ●, ● or ○ LEDs	○	Class 1

Low Dome, Magnetic with Cigar Plug Mount

LED Count	Color Selections	Dome Colors	SAE J845 Certified
3 LED	Single Color, ● LEDs	●	Class 2
3 LED	Single Color, ● LEDs	○	Class 2
6 LED	Single Color, ● LEDs	●	Class 1
6 LED	Single Color, ● LEDs	○	Class 1
12 LED	Single Color, ● LEDs	●	Class 1
12 LED	Single or Dual Colors, ●, ● or ○ LEDs	○	Class 1

● ● ● ● ○ To configure product to your exact needs, visit soundoffsignal.com or contact customer service.

LED BEACONS



High Dome, Flat/Pipe Mount

LED Count	Beacon Style	Color Selections	Dome Colors	SAE J845 Certified
3 LED	Single	Single Color, Upper and Lower ● LEDs	●	Class 2
3 LED	Single	Single Color, Upper and Lower ● LEDs	○	Class 2
6 LED	Single	Single Color, Upper and Lower ● LEDs	●	Class 1
6 LED	Single	Single Color, Upper and Lower ● LEDs	○	Class 1
6 LED	Split	Single Colors, ●, ● or ○ LEDs	○	Class 2
12 LED	Single	Single Color, Upper and Lower ● LEDs	●	Class 1
12 LED	Single or Split	Single or Dual Colors, ●, ● or ○ LEDs	○	Class 1

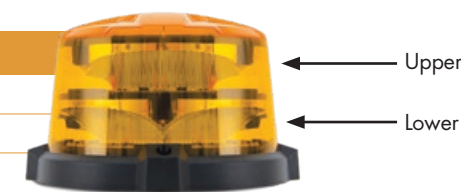
High Dome, Magnetic Mount

LED Count	Beacon Style	Color Selections	Dome Colors	SAE J845 Certified
3 LED	Single	Single Color, Upper and Lower ● LEDs	●	Class 2
3 LED	Single	Single Color, Upper and Lower ● LEDs	○	Class 2
6 LED	Single	Single Color, Upper and Lower ● LEDs	●	Class 1
6 LED	Single	Single Color, Upper and Lower ● LEDs	○	Class 1
6 LED	Split	Single Colors, ●, ● or ○ LEDs	○	Class 2
12 LED	Single	Dual Colors, ●, ● or ○ LEDs	○	Class 1

High Dome Beacon Styles

Single = Single LED color options for upper and lower

Split = Single or Dual LED color options for upper and lower



Accessories

Four Button Cigar Plug Controller	Low and high dome	Configurator Option
VHB Magnetic Plate Adapter Kit	Kit includes (1) one VHB pad and metal plate	PNRLBK03

Beacons sold separately.

● ● ● ● ○ To configure product to your exact needs, visit soundoffsignal.com or contact customer service.



WORK AREA & INTERIOR LIGHTING

SoundOFF
Signal ®

WORK AREA & INTERIOR LIGHTING

LED SEARCH LIGHTS

GOLIGHT®

Durable, remote-controlled search light with directional flexibility



Black Housing

EWL30514ST



Chrome Housing

EWL30064ST



White Housing

EWL30004ST



Included remote



Side View



Back View

Features

- Weatherproof for land and sea applications
- Spot beam with white LEDs, remote included
- 10 high flux LEDs
- 320,000 candela; max beam distance of 3,711 ft.

Beam Patterns:	Spot
Dimensions(l):	7" (17.78 cm)
Dimensions(h):	7" (17.78 cm)
Dimensions(d):	8" (20.32 cm)
Mount:	Permanent mount

WORK AREA

BANKSMAN BM3



Long life, high intensity LEDs

Product #: EWLPT004

Features: Designed specifically to light up the chassis area of trucks, trailers, and emergency apparatuses.

Dimensions(l): 7.48" (19.0 cm)

Dimensions(h): 3.05" (7.75 cm)

Dimensions(d): 0.93" (2.35 cm)

PAR 36 WORK LIGHT



Intense and bright, built for demanding environments

Par 36 Work Light

Features: Waterproof, shockproof, and dust proof.

Dimensions(l): 4.5" (10 cm)

Dimensions(h): 5.7" (14 cm)

Dimensions(dia.): 2.8" (6.4 cm)

Lumens

500 lumen EWLA0500DBDFOW

1000 lumen EWLA1000DBDFOW

1400 lumen EWLB1400DBDFOW

SCENELIGHT S17



Solid aluminum casing

Product #: EWLPT005

Features: Unique curved lighting projection to provide a safer working environment.

Dimensions(l): 9.05" (23.0 cm)

Dimensions(h): 2.48" (6.3 cm)

Dimensions(d): 1.42" (3.6 cm)

LIGHTBARS

DIRECTIONAL WARNING

PERIMETER LIGHTING

CONTROL SYSTEMS

SIRENS & SPEAKERS

ELECTRONICS

BEACONS

WORK AREA

LIGHTBARS

DIRECTIONAL WARNING

PERIMETER LIGHTING

CONTROL SYSTEMS

SIRENS & SPEAKERS

ELECTRONICS

BEACONS

WORK AREA

INTERIOR LIGHTING

DOME LED LIGHT



Officer can see clearly inside and outside the vehicle

Product #: ECVDMLTAL00

Features: Powerful lighting in a sleek design.

Dimensions(h): 0.9" (2.3 cm)

Dimensions(dia): 2.9" (12 cm)

CALISTO



High intensity light source offering lighting solution for multiple applications

Product #: EWLPT001

Features: Sleek, compact, waterproof for multi-market applications.

Dimensions(h): 2.3" (5.84 cm)

Dimensions(dia): 2.3" (5.84 cm)



OUR STORY

Launched in 1992, SoundOff Signal began as a manufacturer of small motorcycle flashers but quickly branched out to include lighting products for emergency vehicles. By the early 2000s, SoundOff was providing high-tech safety solutions for first-responder teams worldwide. With an innovative, entrepreneurial spirit and commitment to reliable, relatable customer service, SoundOff Signal has continued to push the envelope for advancements in integrated, strategic lighting and controls for law enforcement, fire, EMS and amber vehicles.

While we celebrate sustained growth year over year since our inception, what makes SoundOff Signal truly unique is our team of world-class employees who exemplify excellence, quality, and trust in everything they do. Many of our employees are former first responders themselves and approach their roles with a deep sense of recognition for their importance and responsibility for optimal function. We are proud to have over 400 employees between our Corporate Headquarters and our Customer Center in Hudsonville, MI, and now manufacture products for customers across the globe. Our products are there, "when you need it the most," and so is our team.

OUR MISSION

The mission of SoundOff Signal is to provide our customers with superior products and services that meet or exceed their expectations for delivery, quality, and cost-effectiveness. We are committed to our customers through continuous improvement in on-time delivery of quality products; our employees through continuous improvement in their standard of living; our shareholders through continuous improvement of their return on assets; our community through social and environmental responsibility and our strategic business partners through a mutually beneficial growth and business development strategy.

OUR VALUES

- Trustworthiness
- Passionate, Outstanding Customer Service
- A "Live Excellence" Attitude
- Innovation

OUR PRODUCTS

Every product and feature is designed with one purpose in mind: to protect and communicate when it matters most. Our team of engineers bring a robust suite of disciplines including firmware, software, electrical, mechanical, and more. With specific expertise in quality and lighting, we can design, prototype, and validate all within our state of the art facilities. The innovative spirit of SoundOff Signal has rapidly advanced product technology, becoming the premier choice for OEMs, Emergency Vehicles, Amber, and Off-Road. Ground-breaking products include mpower line of silicone lenses, advancements in 3-wire, and nFUSE lightbar functionality. Our vehicle control system, bluePRINT, ensures fleets have the insights and tools they need to perform on the front lines. As a SoundOff Signal customer, you have access to best-in-class software, hardware and services, including PC application updates, smart technology, vehicle analytics, and tech services.

OUR COMMUNITY

We are proud to be a global company with local roots. Headquartered in Hudsonville, MI, our facilities of over 190,000 square foot are home to operations, on-site manufacturing, and customer service. Our 400 employees also boast 30% ownership of the company and are integrally a part of the direction, impact, and future of SoundOff Signal.

Our team not only invests in our company, but also the community. We are active with the Hudsonville Chamber of Commerce, Hand2Hand, Lakeshore Advantage, the Boerigter Center for Career and Calling and many more local and global trade organizations.